



All the Colours of Caran d'Ache
2014

E N G A G E M E N T

The health and safety of our employees and our customers is our first priority and is ensured mainly by the use of materials that have minimum impact on the environment.

Ecology



The mark of responsible forestry

FSC® is the abbreviation of “Forest Stewardship Council”, a label guaranteeing that the wood used for the production of pencils complies with 10 principles upholding respect for forestry development, the rights of local populations and long-term socio-economic well-being of forestry workers.

Product safety through quality assurance



A strict quality control guarantees compliancy of our products with all legal requirements and go even further than minimum requirements.

The CE symbol indicates that the product meets the principal European health and safety standards for products. Our products and their labelling conform to Directive 2009/48/CE on the safety of toys. Their design and manufacture are based on the harmonised standard EN 71, guaranteeing that the product conforms to toy safety legislation.



The AP (Approved Product) symbol indicates that the products have been evaluated by a qualified toxicologist to ensure that they conform to Federal and State legislation in the USA. This certification programme is backed by ACMI “Art and Creative Materials Institute”, an association that guarantees the safety of Fine Arts products in compliance with ASTM D4236.

These products contain no heavy metals or toxic materials. Their packaging is safe and presents no risks.

Production



Since the company was founded in 1915, the whole assortment of Caran d’Ache products is designed, developed and manufactured in Switzerland, in the Caran d’Ache workshops in general. With the “Swiss Made” label, we guarantee our demanding customers exceptional quality, high precision, unrivalled reliability, elegance and originality in the design and production of all our products.

Caran d’Ache is committed to a policy of sustainable development based on the choice of raw materials, energy savings, environmental management and the recovery of waste products.

For example, wood shavings are compressed into briquettes and used as fuel for the central heating system.



SUSTAINABLE DEVELOPMENT

The commitment that a Maison de Haute Ecriture has the duty to uphold.

Caran d’Ache has ensured respect for people, the environment, products and personal safety, which are key conditions for the companies development.

After the excellence of production, certified by the label ISO 9001 in 1996, it is today Caran d’Ache’s ethics and commitments in terms of sustainable development which are recognized with the obtention of the ISO 14001 certification.

Caran d’Ache is one of the few pencil producers with FSC® certification. Received in 2004, it covers not only our raw materials but our entire production process and workshops. All Caran d’Ache pencils are certified as made from wood that comes from strictly managed forests with guaranteed reforestation programmes.

The production of Caran d’Ache graphite pencils is exclusively made of 100% natural products. Pencil leads and coloured chalks are mainly made with natural components and binders. The pigments, mainly synthetic, meet all safety requirements. Pencil varnishes made with modified nitrocellulose do not contain plasticisers and are being progressively replaced by aqueous varnishes, thus reducing the use of solvents and their impact on the environment.





Caran d'Ache

Maison de Haute Écriture

Caran d'Ache, a love affair with Colour

With a worldwide reputation for the quality and beauty of its creations, Caran d'Ache applies its Swiss-made expertise to develop writing instruments and Fine-Arts products.

Born of the passion of its founder for Colour, the Maison has remained loyal to its roots. The pencils, pastels and paints that are designed, developed and manufactured entirely in the Geneva workshops, keep alive the tradition it holds so dear.

Caran d'Ache tells the story of a Swiss family business from the first pencil to its most recent creations. It has applied its precious inherited expertise to creating outstanding products just like Prismalo, the world's first water-soluble colour pencil launched in 1931, which revolutionised the world of design and colour.

Since its very beginning in 1915 and the official opening of the company in 1924 by Arnold Schweitzer, Caran d'Ache's development has been distinguished by its love of beautiful materials.

A never-ending journey through the world of Colour and exploring the most intense pigments, a few days at the heart of materials and an excursion into the universe of light, the Caran d'Ache expertise is a subtle combination of chemistry, science, innovation and creativity.

Sustainable development also plays its part when being a Maison de Haute Ecriture. Environmental quality and protection are an integral part of the manufacturing process with an ever increasing share for FSC®-certified products.

For more than eighty years, Caran d'Ache has inspired and supported several generations in exploring their emotions and their artistic sensitivity. Fantasy and easy-to-use for the Children's products as well as expertise and precision for products in the Fine-Arts range designed for amateurs, artists and design professionals. Each talent has total freedom of expression thanks to the range of Caran d'Ache palettes. Because writing is an expression of a unique style and because the writing of an artist is revealed in his pencil strokes, the Caran d'Ache products can be used and adapted at will.

At the service of the lovers of Colour, Caran d'Ache products allow an area of unlimited freedom to the imagination.

The name CARAN d'ACHE is rooted in the annals of art history. When Arnold Schweitzer founded the company in 1924, he named it after a famous French caricaturist of the Belle Époque, Emmanuel Poiré (1859-1909), whose work he admired.

He signed his works Caran d'Ache, a French transliteration of the Russian word for pencil "karandash".



The creations of Caran d'Ache in a few dates:

- 1929: Fixpencil®, the first metallic clutch pencil
- 1931: Prismalo®, the first water-soluble colour pencil
- 1952: Neocolor®, wax-pastels
- 1966: Fibralo®, fibber tip pens with water-based ink
- 1985: Neopastel®, the oil-pastels
- 1988: Supracolor® Soft, the watersoluble colour pencils
- 1990: Pablo®, the water-resistant colour pencils
- 1999: Neoart™ Aquarelle, extra-fine wax pastel
- 2003: Museum, the watercolour leads
- 2006: Graphite Line, products dedicated to the shades of black
- 2008: Luminance 6901®, the pencil which associates the highest lightfastness with the rich smoothness of a permanent lead
- 2010: Fancolor, products intended for young artists
- 2012: Pastel Pencils and Pastel Cubes, the extra-fine dry pastels
- 2013: Museum Aquarelle, extra-fine soft water-colour in pencil form





NEWS



Museum Aquarelle
Page 12



Pastel Pencils
Page 22



Black Wood, Swiss Wood, Grafik
Page 64-65



Maxi Fluo
Page 69



Notebooks
Page 71

+ Many more wooden boxes
on page 57



Petra Silvant

Artists & Professionals

Hobbies

Gifts

Pencils

- Luminance 6901
- Museum Aquarelle
- Supracolor Soft
- Pablo
- Graphite Line
- Graphite pencils

- Prismalo
- Fancolor

- Pencils wooden box

Pastels

- Pastel Pencils and Cubes
- Neopastel
- Neoart Aquarelle
- Soft Pastels
- Art by Caran d'Ache

- Neocolor I
- Neocolor II

- Pastels wooden box

Paint

- Finest Artists' watercolours
- Acrylic Extra-Fine
- Oil Studio

- Acrylic
- Gouache Studio
- Fancolor

- Paints wooden box

Fibre-tipped pens

- Fibralo
- Fancolor

Extra-fine paste

- Model'Art

ARTISTS & PROFESSIONALS

Luminance 6901®	8-11
Museum Aquarelle	12-13
Supracolor® Soft	14-15
Pablo®	16-17
Graphite Line	18-21
Pastel Pencils	22-23
Pastel Cubes & mixed assortments	24-25
Neopastel®	26-27
Neoart™	28-29
Soft Pastels	30-31
Art by Caran d'Ache	32-33
Oil Studio	34-35
Model'Art	36-37

HOBBIES

Prismalo®	40-41
Fancolor pencils	42-43
Neocolor® I	44-45
Neocolor® II Watersoluble	46-47
Acrylic	48-49
Studio Gouache	50-51
Studio liquid Gouache	52-53
Fibralo® & Fancolor fibre-tipped pens	54-55
Fibre-tipped pens Metallic	54-55

GIFTS

Discovery boxes	58
Pencil wooden boxes	59-60
Graphite Line gift box	60
Pastel wooden boxes	61

OTHER PRODUCTS

Graphite pencils	64-65
Special pencils	66
Marking crayons	66
Mechanical pencils & leads	67
Sharpening machines & erasers	68
Drawing material	69
Brushes & mediums	70
Drawing pads & notebooks	71



Artists and professionals

Initially there is a style, the writing of the artist, his imprint, his identity.

It takes shape and surges forth in the power of a pencil stroke, the softness of chalk or the harmony of a rubbed pastel.

Artists and professional designers, anyone expressing ideas through a sketch, an outline or a drawing needs the reassurance of a reliable, quality tool designed for them.

The fashion designer invokes a muslin in a delicate water colour, the draughtsman outlines his project with generous pastel brushstrokes, the art editor expresses an innovative concept with a few precise pencil lines, whilst the artist investigates variations of black in his studio.

Every professional develops a style, like an encounter narrated in the choice of a technique or a colour.

Accomplices at any moment or comrades-in-art, work instruments or pure objects of pleasure, the Caran d'Ache Fine-Arts products provide every single project with infinite possibilities of shades and materials.

Dedicated to creativity, technical and reliable, they are always the origins of emotion and inexhaustible sources of inspiration.



PENCILS

Luminance 6901®	8-11
Museum Aquarelle	NEW 12-13
Supracolor® Soft	14-15
Pablo®	16-17

GRAPHITE LINE

Graphite Line	18-21
---------------	-------

PASTELS

Pastel Pencils	NEW 22-23
Pastel Cubes & mixed assortments	24-25
Neopastel®	26-27
Neoart™	28-29
Soft Pastels	30-31
Art by Caran d'Ache	32-33

PAINTS

Oil Studio	34-35
------------	-------

EXTRA FINE PASTE

Model'Art	36-37
-----------	-------

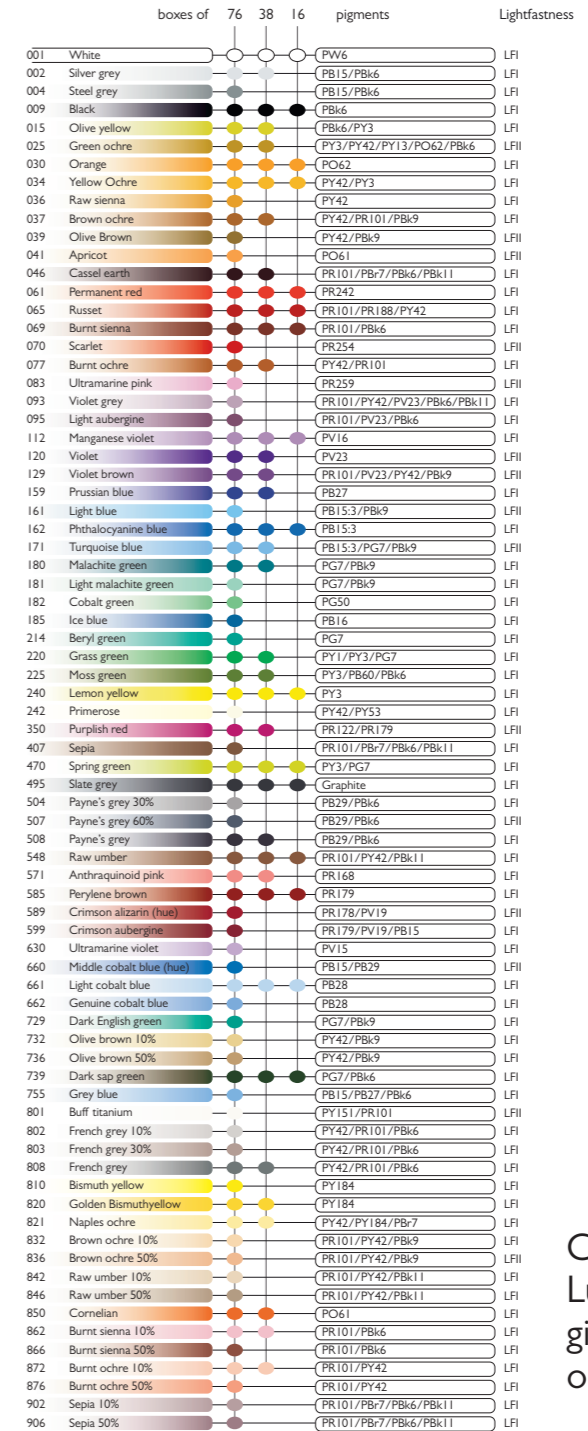




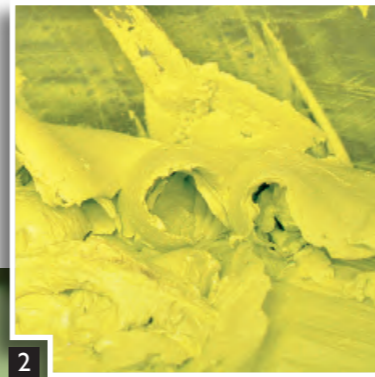
LUMINANCE 6901®



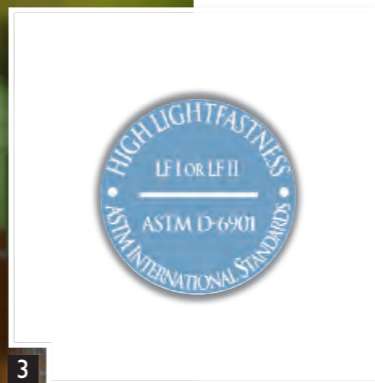
LUMINANCE 6901® COLOUR CHART



Thought and produced in the respect of the environment



The rich smoothness of a permanent lead



Lightfastness compliance with the international ASTM D-6901 standard

Smooth and permanent lead for artists and creative professionals

Lightfastness in compliance with the highest international standard: ASTM D-6901

Wide range of colours developed with a large variety of highly concentrated pigments

- Colour pencil for highest requirements: artists and creative professionals.
- 76 colours, available in separate colours.
- Lead: water-resistant, smooth with a maximal covering power and a high pigment concentration for bright and intense colours. Ø 3.8 mm.
- Lightfastness: Compliance with the highest international standards concerning colour pencils' lightfastness: ASTM D-6901.
- Shaft: round, 8 plies, end-sealed in the same colour as the lead, marked with colour name and code.
- Best cedar.
- Certified FSC® Forest Stewardship Council
- Product conforms to ASTM D4236 (AP for USA only).
- Techniques: Permanent and smooth lead particularly recommended for mixings and gradations, blendings and also shading and burnishing with a white pencil.

The colour pencil Luminance 6901 is complementary with the other pencils of the Artist range, Pablo and Supracolor.

The smooth lead of Luminance 6901 pencils requires the use of a well-sharpened pencil sharpener.

For colour availability and assortments, see colour chart.

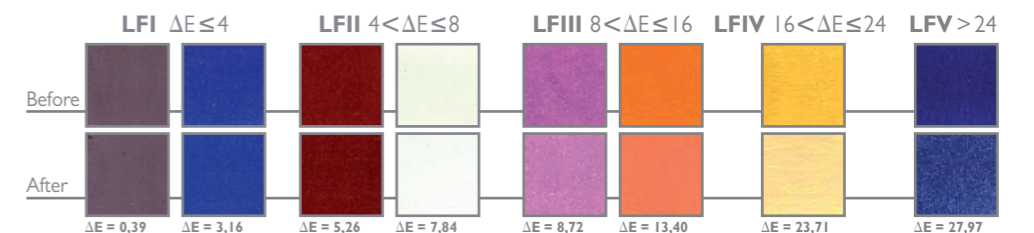


Assortments	Minimum
6901. 316 Metal box of 16 colours	5
338 Metal box of 38 colours	3
376 Metal box of 76 colours	1
476 Wooden box of 84 pieces (see gift pages)	1
6901. ... Separate colours	3
902. 302 Full Blender - Bright Blister 2 pieces (see page 69)	10



What do LFI and LFII mean?

ASTM D-6901



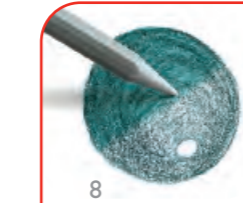
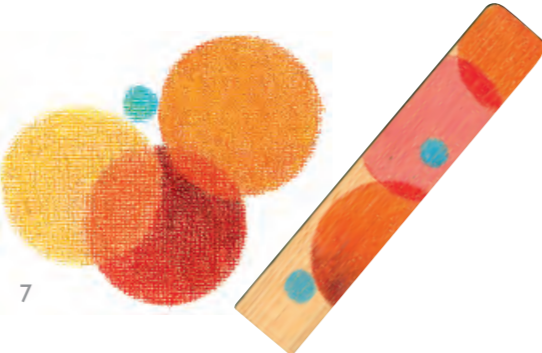
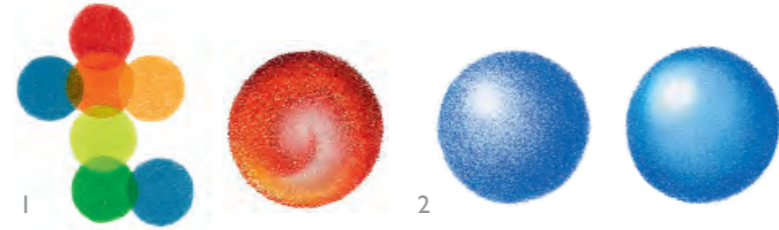
ΔE = quantifies the difference in colour between two sets of specimens before and after exposure to the light. Only colour pencils with the LFI or LFII classification, ΔE ≤ 8, are compliant with the ASTM D-6901 norm.

Check out the Luminance 6901 gift box on page 60.



Techniques possible thanks to the permanent and smooth Luminance 6901® lead

- 1 Endless creation of colours thanks to the richness of the palette and the strong mixing capacity: with layering and/or with the white pencil.
- 2 Shading and burnishing to create volumes and 3D effects: by varying the pressure exerted on the pencil and by using the white pencil.
- 3 Maximum coverage: the support disappears thanks to a gentle, intense and uniform application with no blooming effect.
- 4 "Grisaille" technique by lightly pressing on the pencil: semi-transparent over a finished graphite drawing.
- 5 Sgraffito technique: intense colours are revealed by "scraping" with effects that vary from very fine to very broad.
- 6 Mixed technique with fiber-tipped pens: shade, unify or draw on felt-tip applications without "bleeding".
- 7 Creating on unconventional supports: the smoothness of Luminance 6901 allows you to dare a number of different supports.



Applying *Full Blender - Bright* adds brilliance and intensity to the colours. After polishing, the drawing takes on an extra dimension.

Discover the new Full Blender - Bright on page 69



A wash beforehand with *Supracolor Soft* to tint the sheet of paper and give big volumes and base colours.

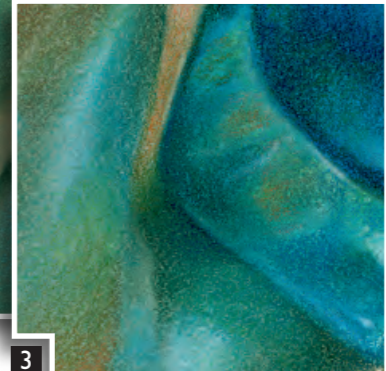


Artist's secrets

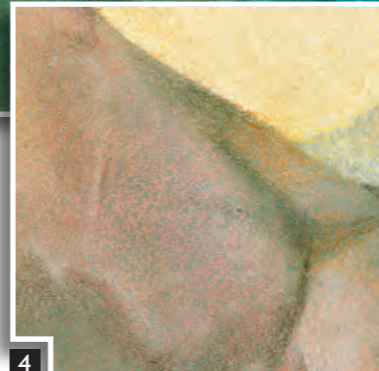
Nicole Caulfield realises a technical composition with 3 of Caran d'Ache's complementary leads: *Supracolor Soft*, (watercolour lead), *Pablo*, (dry and permanent lead) and *Luminance 6901*, (smooth and permanent lead).



Creation of undulating effects on the vase with *Supracolor Soft* using two techniques, "wet on wet" and "dry on wet".



Shading and paper volume effects with *Luminance 6901* that are applied without altering the watercolour parts. Dense colouring of certain parts of the vase to accentuate the volume and intensify shadows.



Pablo to **finish** the angles and provide detail.



MUSEUM Aquarelle



NEW



ARTISTS AND PROFESSIONALS

12

Extra-fine aquarelle in a pencil form

Very high pigment concentration

Exceptional lightfastness can be applied dry or water-soluble

- The extra-fine quality of MUSEUM AQUARELLE colour pencils makes them perfect for all the requirements of watercolour painting and artistic drawing.
- 76 colours, available in separate colours.
- Leads: Soft, Ø 3.8 mm, strong point.
- Exceptional colour fastness (standard Blue Wool Scale) (between ** and *****).
- Pencil: Hexagonal shape, 8 plys, top-quality cedar wood, easy sharpening, matt finish, matt colour cap matches the lead colour, identification number.
- 100% water-soluble immediately.
- High pigment density.
- Low powdering.
- Optimal transparency with no veiled effect.
- Brilliant and vibrant colours.
- Techniques:
 - watercolour, washes, crosshatching, graded applications, unlimited blending possibilities, mixed media.
 - dry or wet drawing on all supports (paper, cardboard, canvas, etc...).



Check out the Museum Aquarelle gift box on page 60.



Watercolours: lay down the palette of colours you want on dry paper. Pick them up with a moist brush and start painting.



Create blends by applying the paint on watercolour paper you have already moistened. As the colours spread you can produce some surprising effects.



Apply watercolour over a layer that has already dried to create a transparent or a glazed effect.

MUSEUM AQUARELLE COLOUR CHART

boxes of	unit	package	Net wt	Pigments	UV
001	White	●	20	PV6	*****
004	Steel grey	●	20	PB6	*****
009	Black	●	20	PB7	*****
010	Yellow	●	20	PY13	*****
015	Olive yellow	●	20	PY3/PB6	*****
020	Golden yellow	●	20	PY8	*****
025	Green ochre	●	20	PY3/PY42/PO62/PB7/PY13	***
030	Orange	●	20	PO62	*****
034	Yellow ochre	●	20	PY42/PY154	*****
036	Raw sienna	●	20	PY42	*****
037	Brown ochre	●	20	PR101	*****
039	Olive brown	●	20	PB7/PY42	*****
041	Apricot	●	20	PO61	*****
044	Terracotta	●	20	PR101/PO62	*****
046	Cassel earth	●	20	PY42/PR101/PY184/PB7	*****
049	Raw umber	●	20	PY42/PR101/PY184/PB7	*****
052	Saffron	●	20	PO62/PR101	****
055	Cinnamon	●	20	PY42/PY184	*****
057	Chestnut	●	20	PB11/PY184	*****
059	Brown	●	20	PR101/PB7	*****
060	Vermilion	●	20	PR254/PO43/PY3	***
065	Russet	●	20	PY42/PR101/PR188	*****
070	Scarlet	●	20	PR170/PR254	*****
077	Burnt ochre	●	20	PR101/PY42	*****
106	Dark plum	●	20	PR23/PV19/PR3	**
112	Manganese violet	●	20	PV16	*****
120	Violet	●	20	PB15/PR122	****
131	Periwinkle blue	●	20	PV23/PV16	****
149	Night blue	●	20	PB60	*****
159	Prussian blue	●	20	PB7/PB60	*****
161	Light blue	●	20	PB15.3/PB69	****
162	Phthalocyanine blue	●	20	PB15.3	*****
171	Turquoise blue	●	20	PB15/PG7	*****
181	Light malachite green	●	20	PG7/PB9	*****
182	Cobalt green	●	20	PG50	*****
185	Ice blue	●	20	PB16	****
210	Emerald green	●	20	PY3/PB15.3	****
212	Chromium oxide green	●	20	PG17	*****
214	Beryl green	●	20	PG7	*****
220	Grass green	●	20	PY3/PG7/PY1	*****
225	Moss green	●	20	PB15/PB6/PY74/PY3	*****
240	Lemon yellow	●	20	PY3	*****
242	Primrose	●	20	PY53/PY42	*****
245	Light olive	●	20	PO61/PY1/PG7	*****
249	Olive	●	20	PY1/PG7/PB7/PO61	*****
350	Purplish red	●	20	PR122	*****
470	Spring green	●	20	PG7/PY3	*****
495	Slate grey	●	20	GRAPHITE	*****
496	Ivory black	●	20	PB6	*****
508	Payne's grey	●	20	PB7/PR29	****
530	Gold cadmium yellow	●	20	PO62/PY74/PY83	*****
542	Light flesh 10%	●	20	PO62	*****
548	Umber	●	20	PB11/PY42	*****
560	Light cadmium red	●	20	PR188	*****
571	Antraquinoid pink	●	20	PR168	*****
575	Carmine lake	●	20	PR179/PB6	*****
583	Violet pink	●	20	PR101/PR168/PO62/PR122	***
599	Crimson aubergine	●	20	PR179/PV19/PB15	***
630	Ultramarine violet	●	20	PV15	*****
640	Dark ultramarine	●	20	PB29/PB1	***
660	Middle cobalt blue	●	20	PB15/PR29	*****
661	Light cobalt blue	●	20	PB28	*****
662	Genuine cobalt blue	●	20	PB28	*****
670	Permanent blue	●	20	PG7/PB15.3	*****
710	Phthalocyanine green	●	20	PG7	*****
719	Dark phthalocyanine green	●	20	PB15/PB6/PY74/PY3	****
720	Bright green	●	20	PG36/PY1/PY3	*****
736	Brown olive 50%	●	20	PY42/PB7	*****
739	Dark sap green	●	20	PG7/PB7	*****
746	Dark flesh 50%	●	20	PR101/PY42/PB7	*****
808	French grey	●	20	PY42/PR101	*****
821	Naples ochre	●	20	PY42/PY184/PB7	*****
850	Cornelian	●	20	PO61	*****
866	Burnt sienna 50%	●	20	PR101/PB7	*****
902	Sepia 10%	●	20	PR101/PB6/PB7/PB6	*****
906	Sepia 50%	●	20	PR101/PB6/PB7/PB6	*****

Lightfastness UV / 150h
***** Excellent
**** Very good
*** Good
** Low



3510.920



3510.420

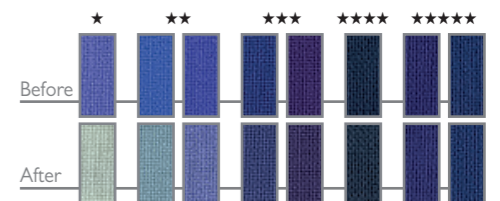


3510.312

Assortments	Minimum
3510. 312 Cardboard box of 12 colours	1
3510. 420 Landscape assortment: cardboard box of 20 colours	1
3510. 920 Marine assortment: cardboard box of 20 colours	1
3510. ... Individual colours	3

What is the Blue Wool Scale ?

An 8-point scale used to measure the lightfastness of colours based on their degree of fading after exposure to light. Our dry pastels have a lightfastness rating of between ** and ***** determined for the 76 colours of our Museum Aquarelle.



ARTISTS AND PROFESSIONALS

13



SUPRACOLOR® Soft Aquarelle



Soft and water-soluble lead

Excellent luminance/opaqueness ratio

Wide range of colours

- Superior-quality water-soluble colour pencils for the most exacting requirements: artists, illustrators, graphic art, art tuition.
- 120 colours, also available individually.
- Lead: water-soluble, soft, Ø 3.8 mm, high breaking-strength, very economical thanks to their exceptional covering power.
- Bright colours, excellent lightfastness.
- Shaft: hexagonal, end-sealed in the same colour as the lead, marked with colour name and code.
- Best cedar
- Certified FSC® Forest Stewardship Council
- Product conforms to ASTM D4236 (AP for USA only)
- Techniques: crosshatching, graded applications, water-colour effects, washes, unlimited blending possibilities, mixed media - can be combined with Pablo permanent colour pencils, Neocolor pastels and Gouache. Recommended for works on big surfaces.

For colour availability and assortments, see colour chart.



The mark of responsible forestry

Draw and wash: draw the subject with Supracolor Soft then carefully work details or disperse the colours loosely with a moist brush. This brings out subtle tones and adds vibrancy to the subject.

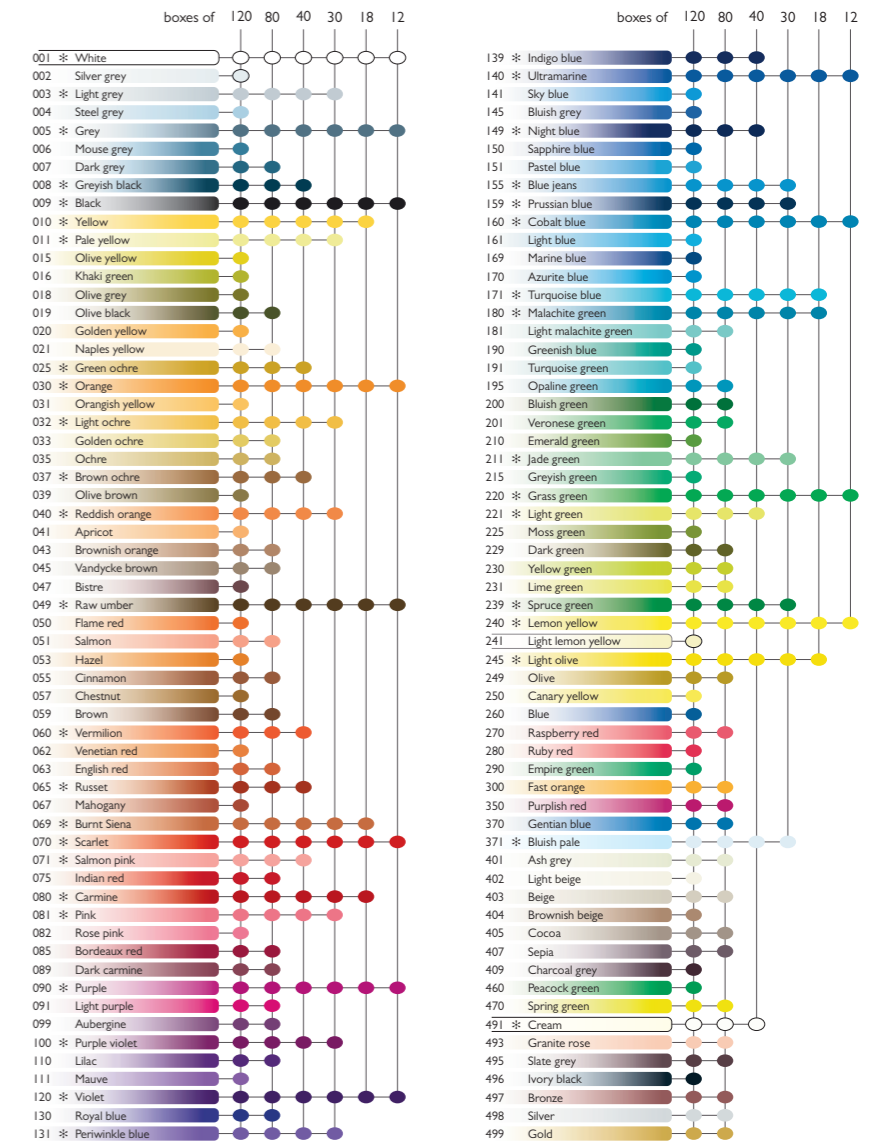


Smudging: spray the drawing with water and smudge sections with a finger.



Powdered pigment: first draw the subject with a moist brush, then rub pigment off the pencil point onto the wet areas with sandpaper. Blow off loose pigment.

SUPRACOLOR® Soft COLOUR CHART



Check out the Supracolor Soft gift boxes on page 59.

Assortments	Minimum
3888. 312 Metal box of 12 colours	5
318 Metal box of 18 colours	5
330 Metal box of 30 colours	5
340 Metal box of 40 colours	3
380 Metal box of 80 colours	1
420 Metal box of 120 colours	1
480 Wooden box of 80 colours (see gift pages)	1
920 Wooden box of 120 colours (see gift pages)	1
3888. ... Individual colours 1-40 *	12
3888. ... Individual colours 41-120	3
902. 302 Full Blender - Bright Blister 2 pieces (see page 69)	10



3888.420



3888.380



3888.340



3888.330



3888.318



3888.312



902.302

Dry and permanent lead resistant to any powder formation

Excellent luminance/opaqueness ratio

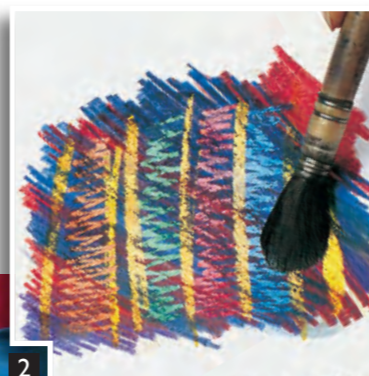
Wide range of colours

- Superior colour pencils for highest requirements: artists, illustrators, graphic art, art tuition.
- 120 colours, also available individually.
- Lead: soft water-resistant leads, Ø 3.7 mm, very economical thanks to their exceptional covering power, excellent lightfastness.
- Shaft: hexagonal, end-sealed in the same colour as the lead, marked with colour name and code.
- Best cedar.
- Techniques: shading, graded applications, mixed media, can be combined with Supracolor Soft Aquarelle and Neocolor pastels. Drawing on wood, photographs.

For colour availability and assortments, see colour chart.



Layering and hatching: subtly graded hues applied locally in transparent or opaque layers create a natural, painterly look.

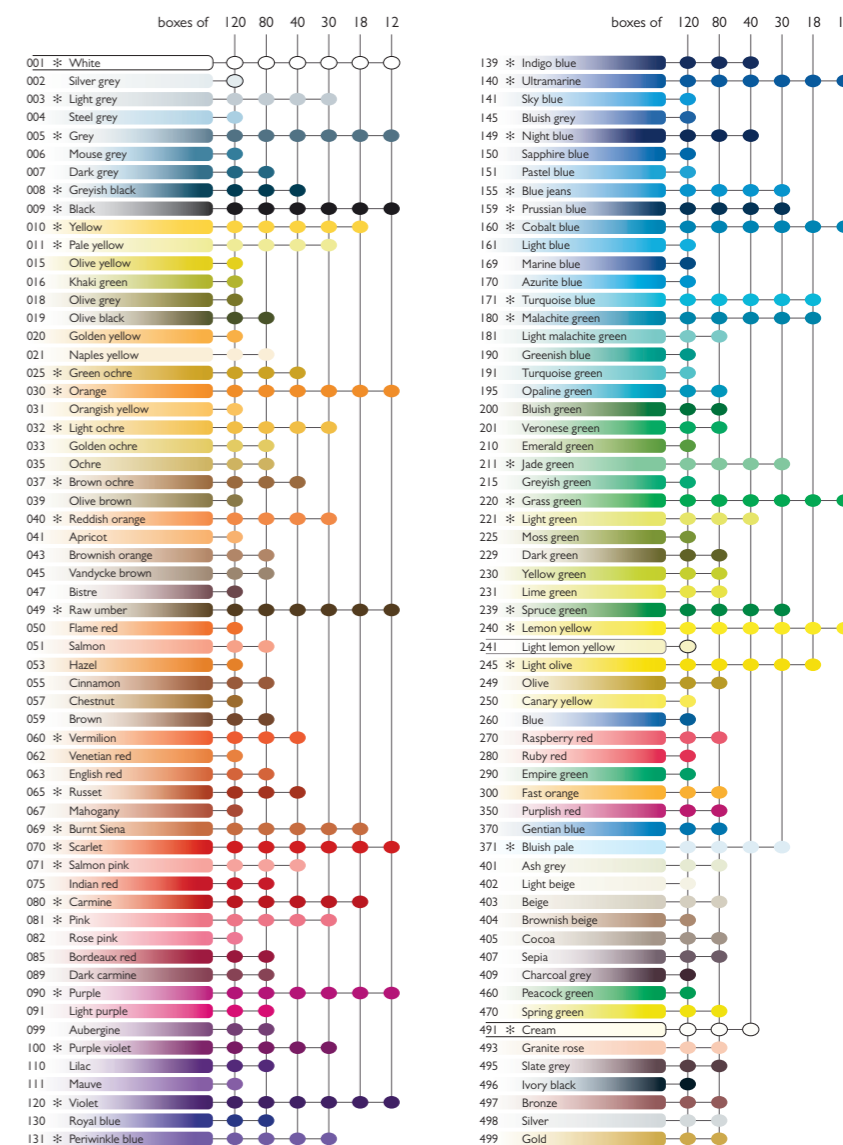


Brushing out: lay down a design with *Supracolor* water-soluble colour pencils, apply a layer of *Pablo* on top, then work over the subject with a moist brush to bring out the design again.



Decoration: the covering capacity and brilliance of *Pablo* permanent colour pencils achieve their full effect on various types of paper and other materials.

PABLO® COLOUR CHART



Check out the Pablo gift box on page 59.

Assortments	Minimum
666. 312 Metal box of 12 colours	5
318 Metal box of 18 colours	5
330 Metal box of 30 colours	5
340 Metal box of 40 colours	3
380 Metal box of 80 colours	1
420 Metal box of 120 colours	1
920 Wooden case of 120 colours (see gift pages)	1
666. ... Individual colours 1-40 *	12
666. ... Individual colours 41-120	3
902. 302 Full Blender - Bright Blister 2 pieces (see page 69)	10



666.420



666.380



666.340



666.330



666.318



666.312



902.302

Get the most out of the shades of black

Purity of the graphite

Wide and regular range of gradations

- The Grafcube is composed of 100% natural graphite (graphite and clay). The cube comes in two sizes, 10mm and 15mm, and three grades, 3B 6B 9B.
- Grafwood Extra-fine graphite pencils, 15 gradations from 4H to 9B
- Technalo graphite pencils, aquarelle lead, 3 gradations (HB, B, 3B)
- Grafstone, pure graphite leads, 3 gradations (HB, 3B, 6B)
- Charcoal pencil
- 100 % soft natural charcoal
- The line is completed by the eraser Technik, a sharpener a stump and a metal box. Everyone can assemble their own Graphite Line assortment.
- Techniques: washes, water colours, stippling, shading, writing, sketches, gradation, blurring, technical and artistic drawing, and mixed techniques.



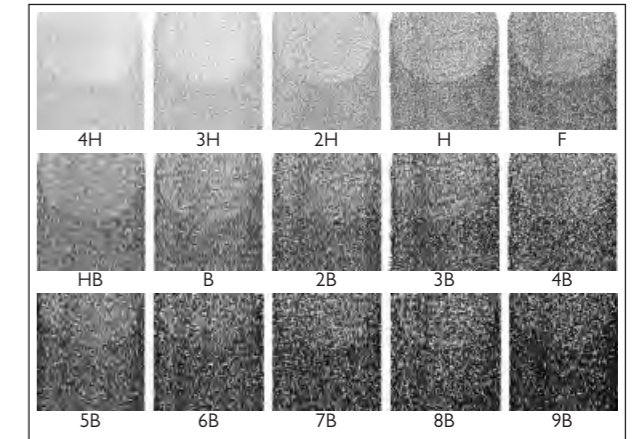
Assortments

Minimum

	4H	3H	2H	H	F	HB	B	2B	3B	4B	5B	6B	7B	8B	9B	
Technalo water-soluble graphite pencil, hexag. Ø 7 mm, 3 mm Ø lead																
779. ...	Separate hardness degrees					250	251		253							12
779. 406	Cardboard box of 6 ass. Pencils															
775. ...	264	263	262	261	260	250	251	252	253	254	255	256	257	258	259	3
776. 493	Soft natural charcoal plastic tube, ass.3															
781. ...									253			256			259	8
782. ...									253			256			259	3
780. ...						250			253			256				12
177. 305	ARTIST stump 140 mm															
476. 002	Double pencil sharpening															
171. 420	TECHNIK eraser															
100008. 721	Empty metal box															
775. 512	Graphite Line Book (see next page)															
3000. 415	Graphite Line gift box (see pages gift)															



Wide range from 4H to 9B, with a great regularity of the gradations



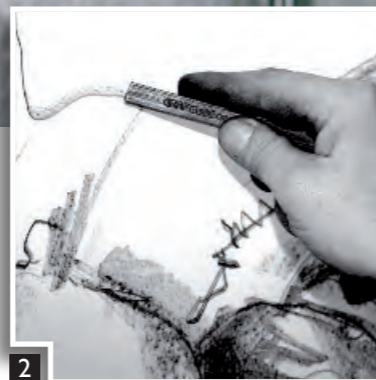
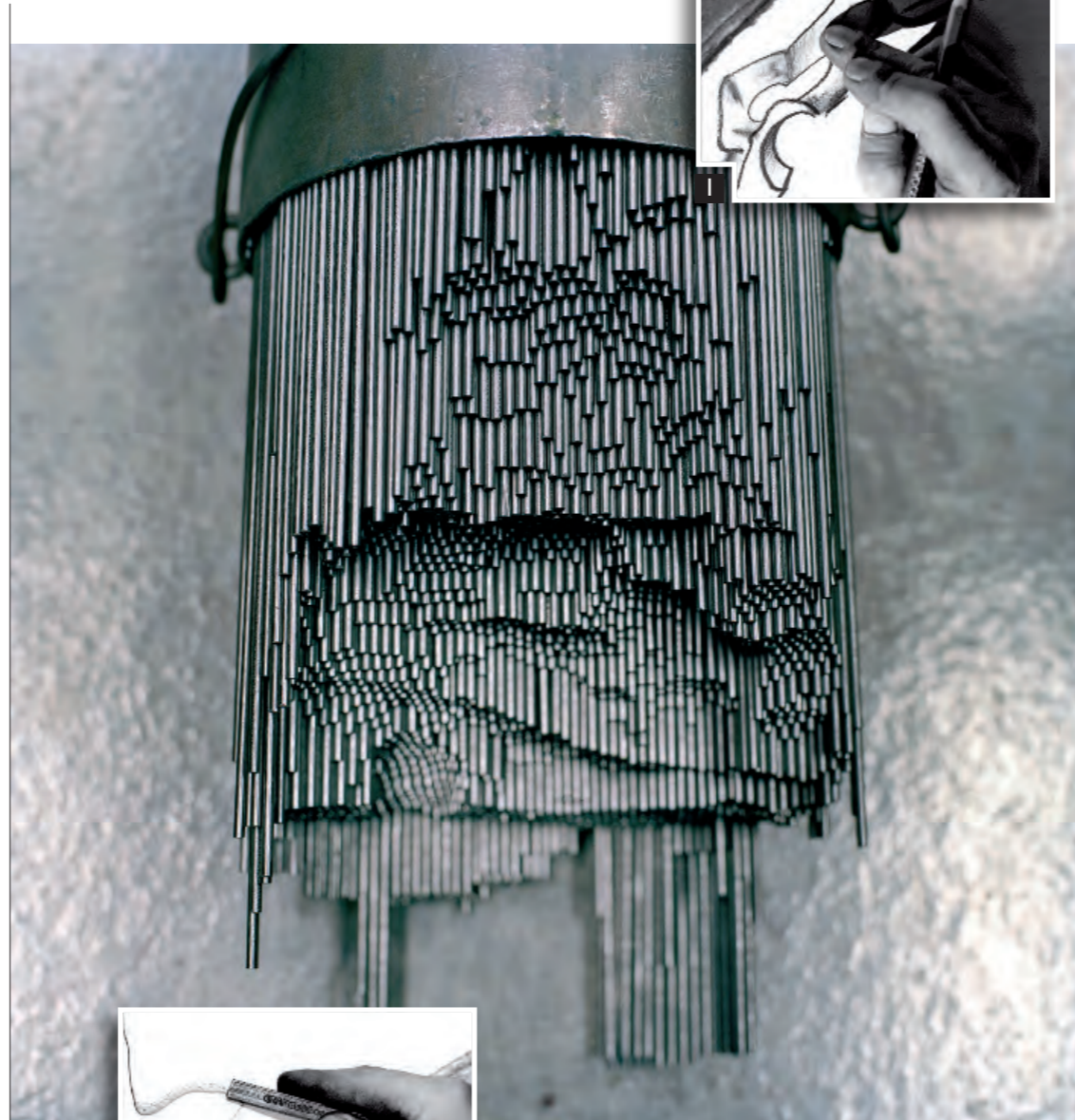
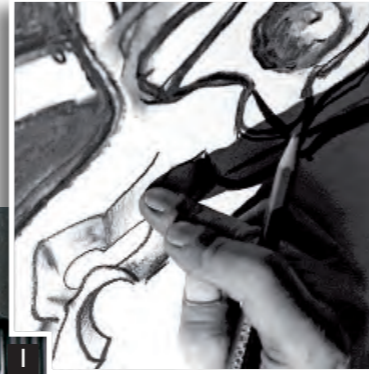
DISPLAY

- 1 full display
- Total pieces delivered: 276
- (31.5 x 26.5 x 16.5 cm)



PP0775.299

The blackest of the 9B's for extreme contrasts and the stump for softness...



A feeling of pure sensuality of the raw material in the hollow of the hand and the mineral character of shadow and light.

Check out the Graphite Line gift box on page 60.



PP0775.298

	Display content	Quantities delivered with the display	Selling unit in the display
775.	250 Artist graphite pencil GRAFWOOD - HB	6	6
	251 Artist graphite pencil GRAFWOOD - B	6	6
	252 Artist graphite pencil GRAFWOOD - 2B	6	6
	253 Artist graphite pencil GRAFWOOD - 3B	6	6
	254 Artist graphite pencil GRAFWOOD - 4B	6	6
	255 Artist graphite pencil GRAFWOOD - 5B	6	6
	256 Artist graphite pencil GRAFWOOD - 6B	6	6
	257 Artist graphite pencil GRAFWOOD - 7B	6	6
	258 Artist graphite pencil GRAFWOOD - 8B	6	6
	259 Artist graphite pencil GRAFWOOD - 9B	6	6
	260 Artist graphite pencil GRAFWOOD - F	6	6
	261 Artist graphite pencil GRAFWOOD - H	6	6
	262 Artist graphite pencil GRAFWOOD - 2H	6	6
	263 Artist graphite pencil GRAFWOOD - 3H	6	6
	264 Artist graphite pencil GRAFWOOD - 4H	6	6
781.	253 Artist full graphite GRAFCUBE 10 mm - 3B	8	8
	256 Artist full graphite GRAFCUBE 10 mm - 6B	8	8
	259 Artist full graphite GRAFCUBE 10 mm - 9B	8	8
782.	253 Artist full graphite GRAFCUBE 15 mm - 3B	12	12
	256 Artist full graphite GRAFCUBE 15 mm - 6B	12	12
	259 Artist full graphite GRAFCUBE 15 mm - 9B	12	12
779.	250 TECHNALO water-soluble graphite pencil HB	12	6
	251 TECHNALO water-soluble graphite pencil B	12	6
	253 TECHNALO water-soluble graphite pencil 3B	12	6
780.	250 GRAFSTONE pure graphite pencil HB	12	4
	253 GRAFSTONE pure graphite pencil 3B	12	4
	256 GRAFSTONE pure graphite pencil 6B	12	4
776.	509 ARTIST Art by CdA synthetic charcoal pencil	10	8
	493 Soft natural charcoal plastic tube, ass.3	5	5
171.	420 TECHNIK eraser	9	9
177.	305 ARTIST stump 140 mm	10	10
476.	002 Double pencil sharpening	10	10
100008.	721 Metal box empty	10	10

ROUND METAL BOX 15 GRAFWOOD

- (4 x 19.8 cm)

775. 315 Round Metal Box Grafwood content:

Artist graphite pencil GRAFWOOD - 9B
Artist graphite pencil GRAFWOOD - 8B
Artist graphite pencil GRAFWOOD - 7B
Artist graphite pencil GRAFWOOD - 6B
Artist graphite pencil GRAFWOOD - 5B
Artist graphite pencil GRAFWOOD - 4B
Artist graphite pencil GRAFWOOD - 3B
Artist graphite pencil GRAFWOOD - 2B
Artist graphite pencil GRAFWOOD - B
Artist graphite pencil GRAFWOOD - HB
Artist graphite pencil GRAFWOOD - F
Artist graphite pencil GRAFWOOD - H
Artist graphite pencil GRAFWOOD - 2H
Artist graphite pencil GRAFWOOD - 3H
Artist graphite pencil GRAFWOOD - 4H
1 metal box



6 GRAFWOOD METAL BOX

- (5.5 x 18.3 x 1.9 cm)

775. 306 Grafwood metal box content:

Artist graphite pencil GRAFWOOD - 9B
Artist graphite pencil GRAFWOOD - 7B
Artist graphite pencil GRAFWOOD - 5B
Artist graphite pencil GRAFWOOD - 3B
Artist graphite pencil GRAFWOOD - HB
Artist graphite pencil GRAFWOOD - 2H
1 metal box



GRAPHITE LINE BOOK

- (23 x 16 x 3.5 cm)

775. 512 Graphite Line Book delivered with

1 book of FSC paper (454.002)
5 GRAFWOOD of 5 gradations (HB, 2B, 4B, 6B, 9B)
1 Art by CdA: white pastel pencil
3 Natural soft charcoals
1 Technik Eraser
1 Kneadable eraser
1 double pencil sharpener
1 metal box



SMALL DISPLAY

- 1 full display
- Total pieces delivered: 168
- (26.5 x 16.5 x 8.7 cm)

	Display content	Quantities delivered with the display	Selling unit in the display
775.	250 Artist graphite pencil GRAFWOOD - HB	12	6
	251 Artist graphite pencil GRAFWOOD - B	6	6
	252 Artist graphite pencil GRAFWOOD - 2B	12	6
	253 Artist graphite pencil GRAFWOOD - 3B	12	6
	254 Artist graphite pencil GRAFWOOD - 4B	12	6
	255 Artist graphite pencil GRAFWOOD - 5B	6	6
	256 Artist graphite pencil GRAFWOOD - 6B	12	6
	257 Artist graphite pencil GRAFWOOD - 7B	6	6
	258 Artist graphite pencil GRAFWOOD - 8B	12	6
	259 Artist graphite pencil GRAFWOOD - 9B	12	6
	260 Artist graphite pencil GRAFWOOD - F	6	6
	261 Artist graphite pencil GRAFWOOD - H	6	6
	262 Artist graphite pencil GRAFWOOD - 2H	6	6
	263 Artist graphite pencil GRAFWOOD - 3H	6	6
	264 Artist graphite pencil GRAFWOOD - 4H	6	6
779.	250 TECHNALO water-soluble graphite pencil HB	12	6
	251 TECHNALO water-soluble graphite pencil B	12	6
	253 TECHNALO water-soluble graphite pencil 3B	12	6



PASTEL PENCILS

NEW



ARTISTS AND PROFESSIONALS

22

Extra-fine dry pastels developed in close collaboration with master pastel artists

The widest palette of shades available identically in two complementary mediums: pencil and cube

Assortments of pencils, cubes and mixed meet the most demanding standards

- 84 colours available in sets of pastel pencils, themed sets (two mediums: cube and pencil), in a selection of 6 shades of cubes and individual pencils.
- Generous shading, high pigment concentration for rich and vibrant colours, powerful coverage.
- Pure colours, ultra-fine pigments.
- Exceptional lightfastness, conforming to standard Blue Wool Scale.
- Pencils: hexagonal, 8 plies, large 4.7 mm lead, strong point, best cedar wood, matt colour cap matches the lead colour, identification number.
- Cube: Dimensions: 6 x 83 mm, easy to handle, versatile: solid colour work (edges) or delicate work (corners), colour identification number.
- Product conforms to ASTM D4236 (AP for USA only)

The delicate lead of the pastel pencils requires the use of cutter.

For colour availability and assortments, see colour chart.



Check out the Pastel Pencils gift box on page 60.

Long matt cap with exactly the same colour as the pastel lead.

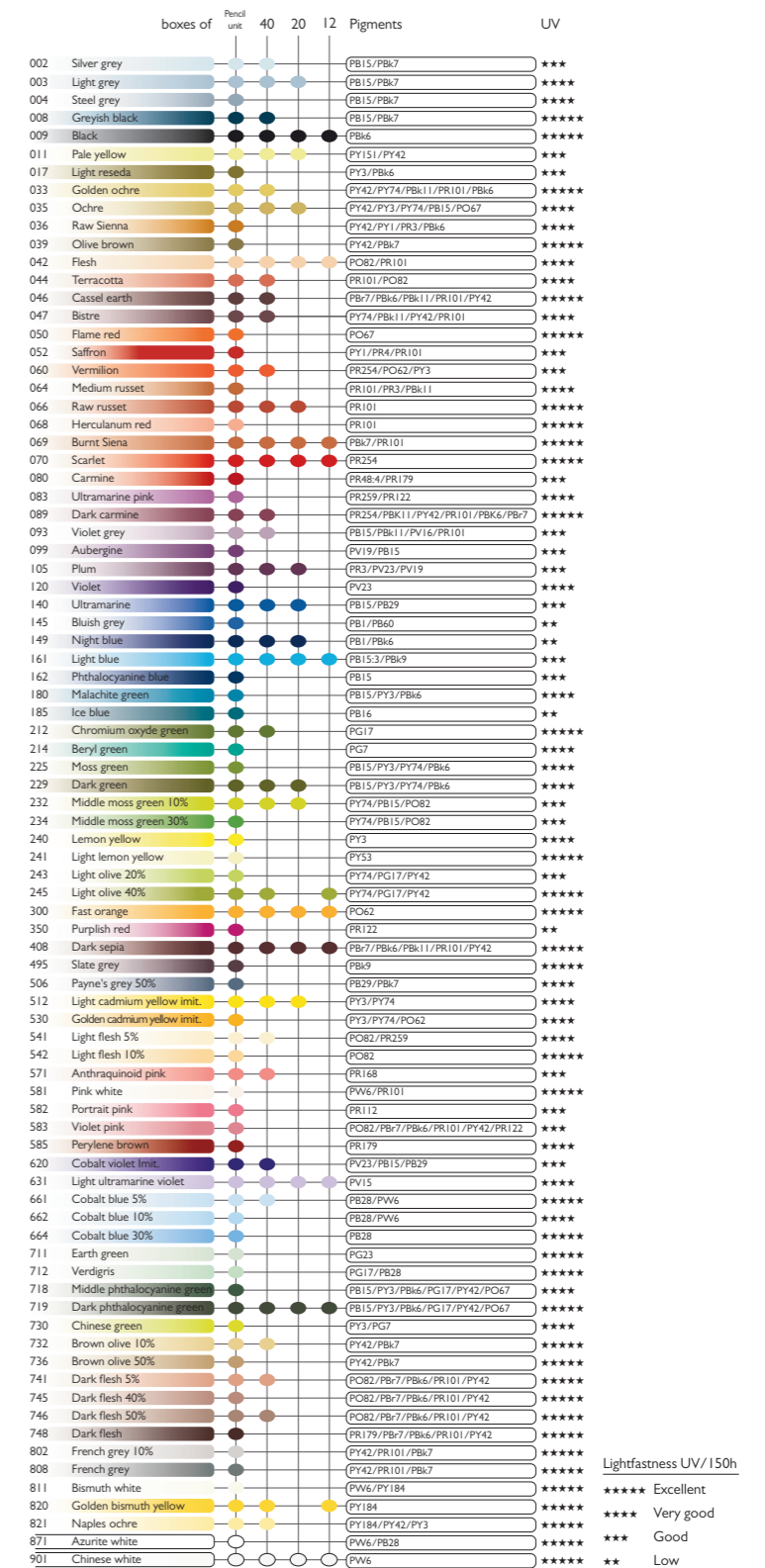


Pure colours, ultra-fine pigments.



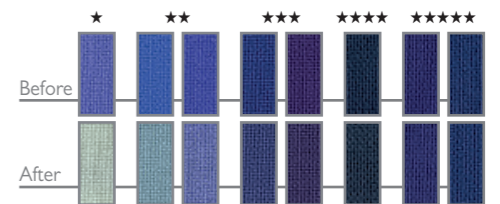
Large (Ø 4.7 mm) resistant lead, best sharpened with sharp blade.

PASTEL PENCILS COLOUR CHART



What is the Blue Wool Scale ?

An 8-point scale used to measure the lightfastness of colours based on their degree of fading after exposure to light. Our dry pastels have a lightfastness rating of between ** and ****.



Assortments	Minimum
788. 340 Cardboard box of 40 colours	1
320 Cardboard box of 20 colours	1
312 Cardboard box of 12 colours	1
788. ... Individual colours Pastel Pencils	3



788.340



788.320



788.312

ARTISTS AND PROFESSIONALS

23



A number of techniques are possible using the combination of Pastel Pencils and Pastel Cubes:

- Details and flat surfaces:** these two media with an identical colour range offer a wealth of lines, textures and combinations: use the point of the *Pastel Pencils* for detailed work and the sides of the *Pastel Cubes* for flat surfaces.
- Hatching:** play with overlaying, create volume and add strength to surfaces by drawing a series of lines more or less close together with the *Pastel Pencils* or the *Pastel Cubes*.
- Blurring:** blur the colours with a finger or a blending stick to soften a transition, create subtle mixes or produce dissolve effects.
- Erase:** tap lightly with the kneaded rubber to retouch, erase or lighten your drawings.
- Pointillage:** apply touches of colour different distances apart in different thicknesses and orientation to achieve a spotted effect.
- Water colour:** create watercolour backgrounds by adding water or turpentine.



Making a sky by blurring and overlaying conserving the pigment powders. The rich cameos of blue and light purple create subtle, soft gradations.

1



Capturing the shapes of petals with a finely sharpened Pastel Pencil. The hard lead delivers a clean, precise line.



3

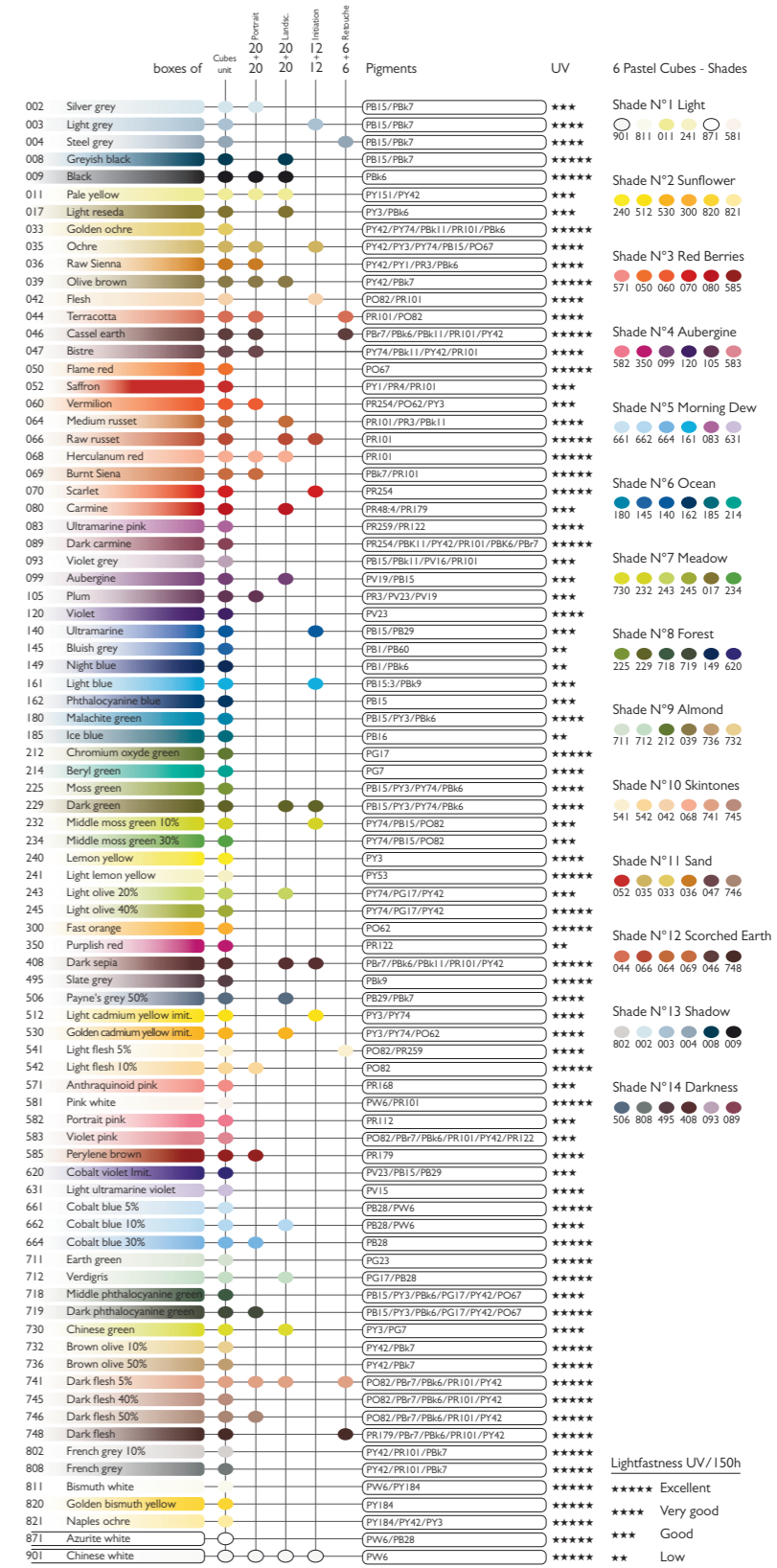
The edges of *Pastel Cube* and the sharp *Pastel Pencil* are perfect for the detailing of flowers.



4

Different results can be achieved by using Pastel Cubes and Pastel Pencils of the same colour: covering a flat coloured surface with the *Pastel Cube* does not alter the sharpness of lines drawn with the *Pastel Pencil*.

PASTEL PENCILS AND PASTEL CUBES COLOUR CHART



Artist's secrets

Muriel Gutierrez uses the *Pastel Pencil* and the *Pastel Cube* to complement each other throughout her composition. She sharpens her *Pastel Pencil*, exposing a few centimetres of lead, and breaks her *Pastel Cubes* to play with all the flat surfaces and sharp edges.

Assortments Minimum

7880. 420	Landscape assortment: cardboard box containing 20 Pastel Pencils and 20 Pastel Cubes + 1 sandpaper		
520	Portrait assortment: cardboard box containing 20 Pastel Pencils and 20 Pastel Cubes + 1 sandpaper		
412	Initiation assortment: cardboard box containing 12 Pastel Pencils and 12 Pastel Cubes + 1 sandpaper		
406	Retouche assortment: cardboard box containing 6 Pastel Pencils and 6 Pastel Cubes + 1 sandpaper		
6 Pastel Cubes - Shades			
7806. 001	N°1 Light	002 N°2 Sunflower	
003	N°3 Red Berries	004 N°4 Aubergine	
005	N°5 Morning Dew	006 N°6 Ocean	
007	N°7 Meadow	008 N°8 Forest	
009	N°9 Almond	010 N°10 Skintones	
011	N°11 Sand	012 N°12 Scorched Earth	
013	N°13 Shadow	014 N°14 Darkness	
7800. ...	Individual colours Pastel Cubes	3	





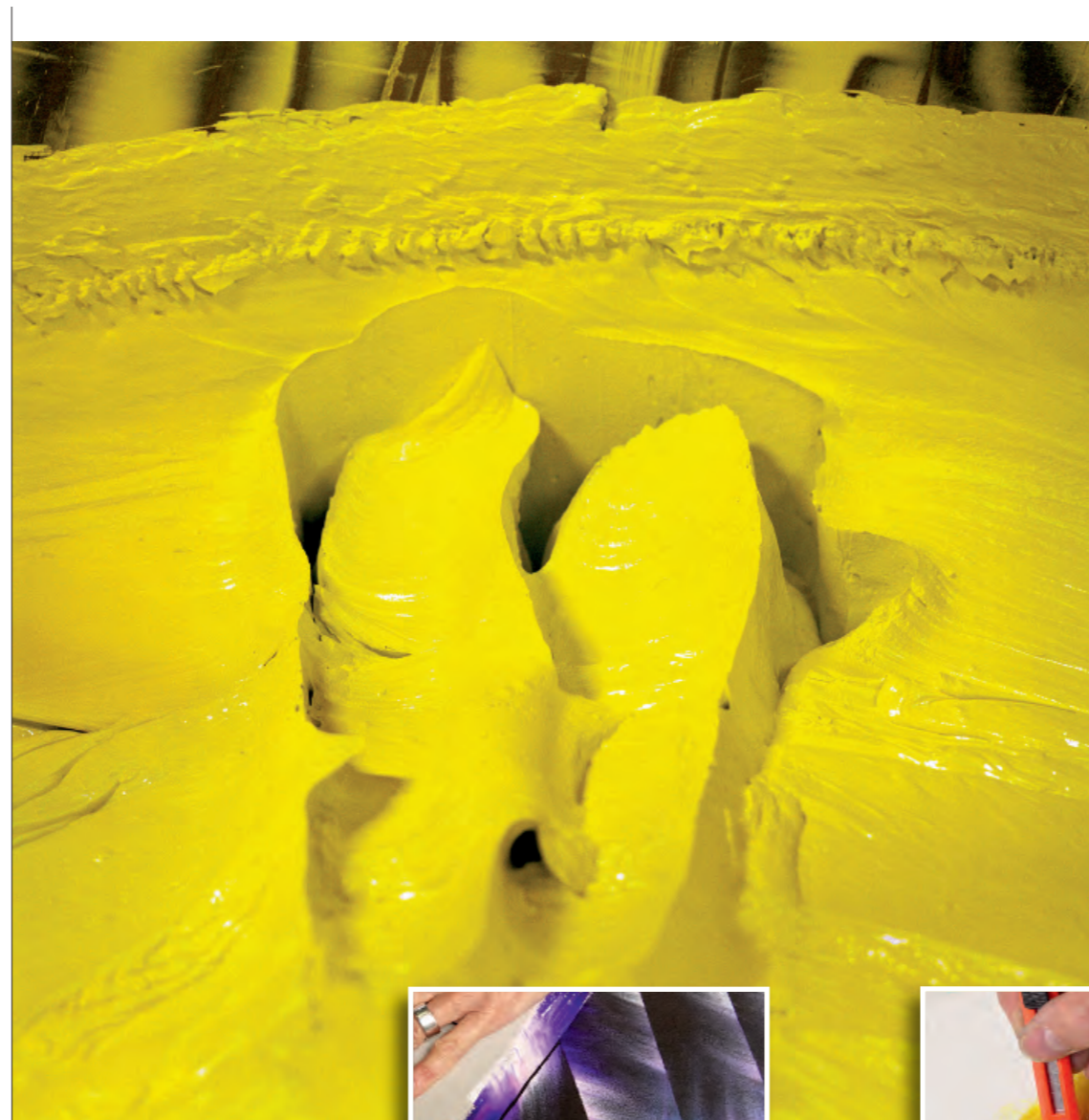
Intense and uniform colours

Wide selection of colours

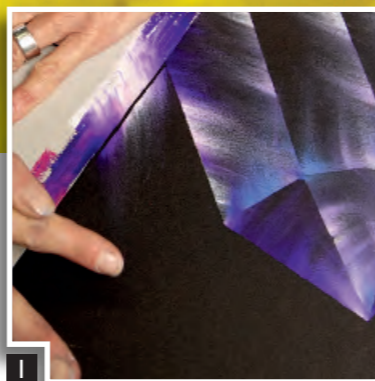
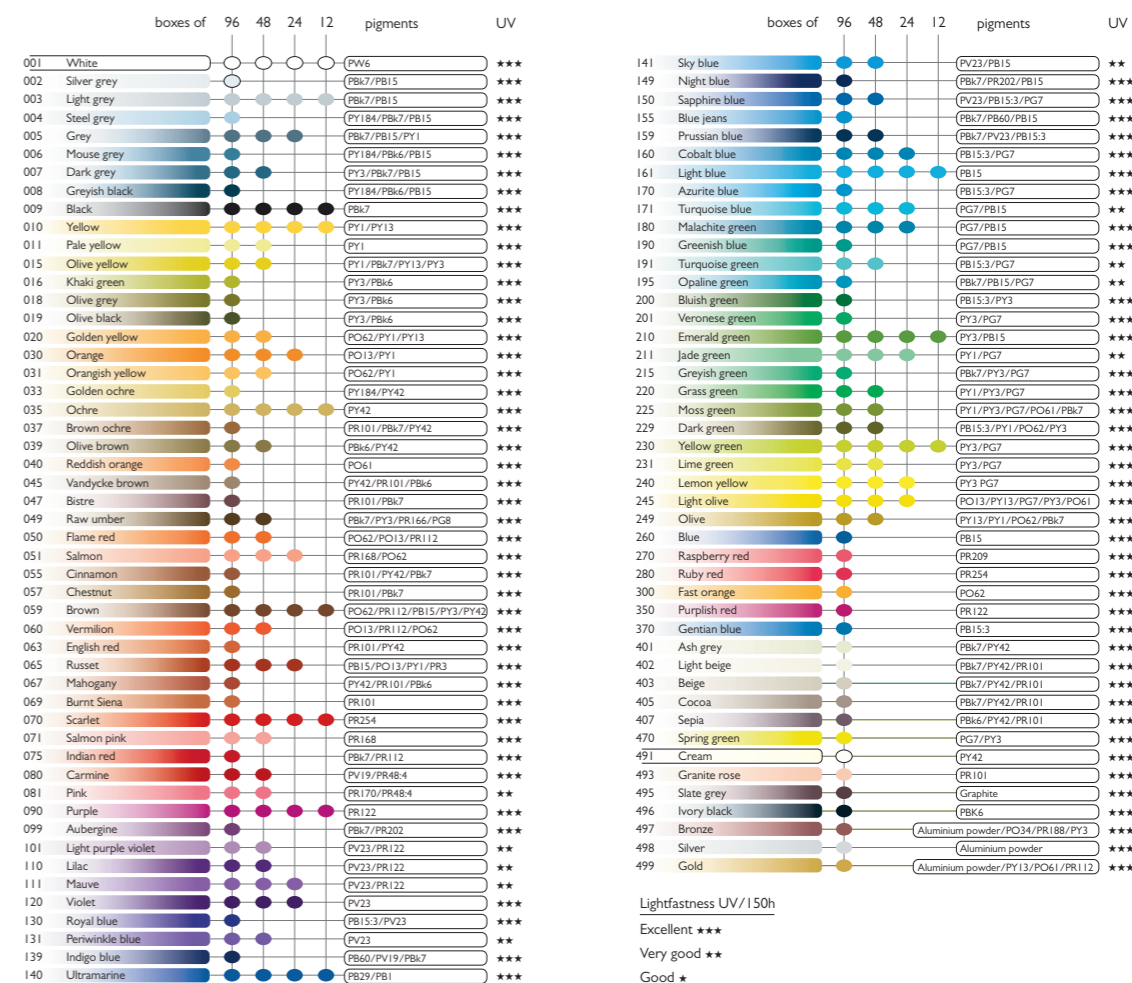
Excellent luminance/opaqueness ratio

- Very high-quality oil pastels for professional and amateur artist's requirements.
- Also recommended for advanced tuition.
- 96 colours, also available individually.
- Pastel: water-resistant colours, soft, non-powdery, soluble in turpentine (spirits of turpentine).
- Very high pigment concentration, economical in use thanks to the high covering capacity.
- Excellent colour stability.
- Excellent lightfastness.
- Product conforms to ASTM D4236 (AP for USA only).
- Techniques: unlimited colour blending possibilities, templates, impregnating and colouring, finger dragging. Also recommended for use on dark paper.
- Applicable on various supports (paper, cardboard, canvas, a.s.o.).

For colour availability and assortments, see colour chart.



NEOPASTEL® COLOUR CHART



Templates: apply the pastel around the edge of a smooth template. Rub the colours off the template onto the paper with your finger.



Sgraffito: overlay the colour then scratch the top layer with a knife or spatula.

Check out the Neopastel gift boxes on page 61.

Assortments	Minimum
7400. 312 Cardboard box of 12 colours	5
324 Cardboard box of 24 colours	5
348 Cardboard box of 48 colours	3
396 Metal box of 96 colours with a sleeve	1
7400. 996 Wooden box of 96 colours (see gift pages)	1
7400. 415 Wooden box of 15 colours (see gift pages)	1
7400. ... Individual colours	3
Accessories	
911. 000 Special fixative for wax and oil drawings. Spray the work with a thin coat of Protector.	6
913. 000 Spray for pencils, charcoals and dry pastels (400 ml)	6





NEOART™ Aquarelle



Pastel of large diameter recommended for works on big surfaces

Bright and semi-opaque colours

Very high pigment concentration

- Finest wax pastels for highest professional and artistic requirements. Excellent for watercolouring techniques.
- 60 colours, available in assortments and individually.
- Water-soluble wax pastels. Strong, bright semi-opaque colours of exceptional purity and intensity thanks to very high pigment concentrations.
- Excellent lightfastness.
- Techniques:
 - dry or wet drawing and painting on all supports (paper, cardboard, glass, a.s.o.)
 - watercolouring, washes, scraping back (sgraffito).

For colour availability and assortments, see colour chart.



Watercolouring and wash technique: rub a thick layer of Neoart vigorously onto a smooth palette and apply the colours with a moist brush to achieve a watercolour effect. Apply details direct with dry Neoart. Work details or spread the colour loosely with a moist brush. For strong accents, pick up pigment straight off the stick.

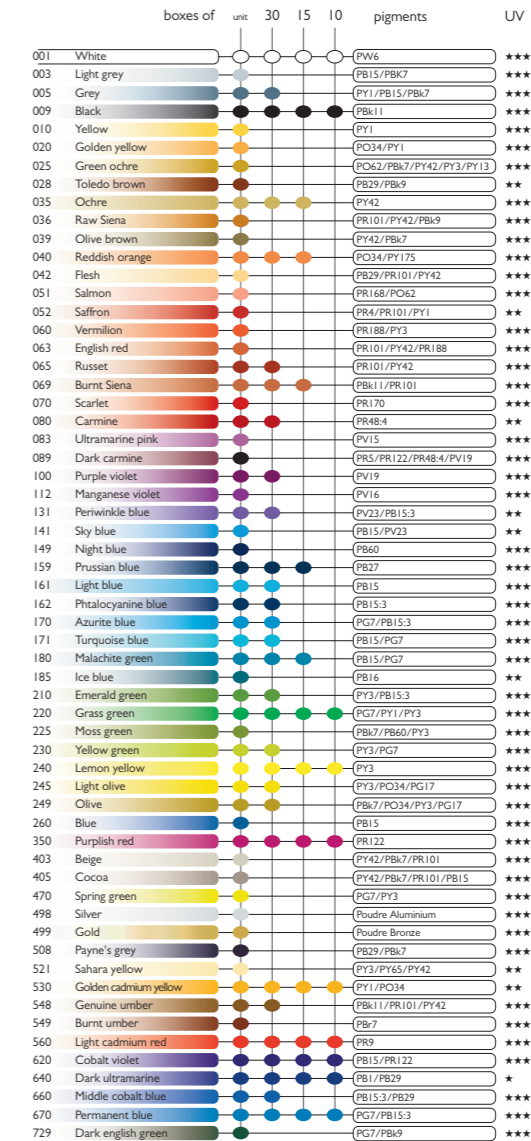


Sponging: apply different colours dry, then create dynamic blends with a moist sponge.



Rainbow technique: apply the various colours dry onto a smooth palette. Pick up the colours with a moist brush and transfer them sideways onto the paper.

NEOART™ Aquarelle COLOUR CHART



Lightfastness UV / 150h
 Excellent ***
 Very good **
 Good *

Check out the Neoart gift box on page 61.



7300.430



7300.415



7300.410

Assortments	Minimum
7300. 410 Cardboard box of 10 colours	1
7300. 415 Cardboard box of 15 colours	1
7300. 430 Cardboard box of 30 colours	1
7300. 460 Wooden case of 60 colours (see gift pages)	1
7300. . . Individual colours	3

Designed to last

High pigment concentration

- Professional-grade soft dry pastels with a high pigment content.
- Particularly suited to artistic drawing.
- 60 colours, available in assortments or individually.
- Soft, smooth and uniform texture.
- Excellent lightfastness.
- Bright colours.
- Techniques: wiping, flat applications, line drawings, graded effects, superimpositions, unlimited mixings.

For colour availability and assortments, see colour chart.



Scumbling:

apply Soft Pastels in layers - carefully, like a veil, so that the colours do not blend. Smudge transitions with a pastel brush or your fingers. You can even apply light colours over dark, particularly on velours paper.



Texturing: powdered pigment that has been scraped off the pastel and fixed is very expressive. Work the details with a blending stump. Scraping out an overlaid layer reveals the colour underneath. Pigment adheres better on scratched areas of paper.



Sketching and painting: carefully applying many different colours side by side and on top of one another creates the optical illusion of a blended colour. Break Soft Pastels into handy-sized bits and draw with the sides too.

SOFT PASTELS COLOUR CHART

boxes of	unit	30	15	pigments	UV
001	White			PV6	***
004	Steel grey			PB6/PB29	***
009	Black			PB7/PV23	***
010	Yellow			PY184/PY65	***
015	Olive yellow			PG17/PY3/PO67	***
020	Golden yellow			PY83	***
021	Naples yellow			PY53/PY42	***
030	Orange			PO61	***
034	Yellow ochre			PY42	***
036	Raw Sienna			PY42/PR101	***
037	Brown ochre			PB7	***
041	Apricot			PO62/PR168	*
042	Flesh			PY42/PB7	***
048	Light genuine umber			PB7	***
050	Flame red			PO34	**
057	Chestnut			PB7/PR101/PY42	***
059	Brown			PB7/PR101/PB15	***
062	Venetian red			PR101	***
065	Russet			PR101	***
069	Burnt Sienna			PR101/PB7	***
070	Scarlet			PR254	***
071	Salmon pink			PR188	*
080	Carmine			PY19/PR48-4	***
083	Ultramarine pink			PR122/PR29	***
089	Dark carmine			PB7/PR254	***
111	Mauve			PV2	**
120	Violet			PV3	**
131	Periwinkle blue			PB29/PV23	**
140	Ultramarine			PB29/PV23/PB15	***
141	Sky blue			PB29	***
145	Bluish grey			PB60	**
159	Prussian blue			PB27	***
161	Light blue			PB15	**
170	Azurite blue			PB16	***
171	Turquoise blue			PB15/PG7	***
191	Turquoise green			PG7	***
211	Jade green			PG7	***
220	Grass green			PY3/PY1/PG7	***
221	Light green			PG36	*
225	Moss green			PY14/PB7/PG7/PG17/PO67	***
230	Yellow green			PG7/PY3	***
235	Middle moss green			PB15/PY74	***
240	Lemon yellow			PY184	***
249	Olive			PG17/PO34/PY3/PB7	***
350	Purplish red			PR122	***
407	Sepia			PR101/PB7/PB15	***
492	Reddish sand			PB7	***
503	Pastel grey			PB6/PB29	***
508	Paynes' grey			PB7/PB29	***
530	Golden cadmium yellow			PY184/PO34	**
548	Genuine umber			PY42/PB11/PR101	***
549	Burnt umber			PB7/PB7	***
560	Light cadmium red			PR9	***
630	Ultramarine violet			PV23/PV15	***
640	Dark ultramarine			PB29/PB15/PB11	***
660	Middle cobalt blue			PB29/PB15	***
661	Light cobalt blue			PB29	***
670	Permanent blue			PB16	***
729	Dark english green			PG17/PY74/PO67/PY3/PB13	***
730	Chinese green			PY3/PG17	***

Lightfastness UV/150h
 *** Excellent
 ** Very good
 * Good



7200.430



7200.415

Assortments	Minimum
7200. 415 Cardboard box of 15 colours	1
430 Cardboard box of 30 colours	1
7200. ... Individual colours	3

Range for drawing and sketching

Mineral colours, warm tones

Uniform shading

- Sets of hard dry pastels and top-quality pencils for artistic use and professional drawing.
- ART by CARAN d'ACHE products are ideal for sketching, figure drawing and portraits.
- High-quality pigments
- Excellent lightfastness
- Techniques: painterly drawing, fine ruling, solids, line drawing, graded effects
- Charcoal drawings and hard dry pastel images can be fixed with the Caran d'Ache Fixative
- Because of the fragility of the pastel pencil leads and the synthetic charcoal, we advise sharpening these products with sandpaper.



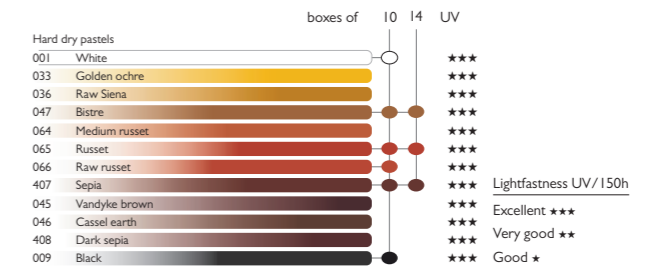
ART by CARAN d'ACHE 707/8005

Technical and artistic drawing

Technograph: The hard (H series) leads are intended chiefly for draughting work. The softer B grades are for freehand drawing.



ART by CARAN d'ACHE COLOUR CHART



Wash techniques: draw the subject with a *Technalo* water-soluble pencil, then work it with a moist brush as desired.

Sketching, smudging, dabbing out: on tinted paper, you can work up the subject step by step in very light or very dark blended tones using the standard range of dry pastels.

Sketching out and combining: natural charcoal is ideal for treating subjects in broad terms. Sanguine provides a lively, warm approach. All Art by Caran d'Ache products can be combined as desired.

Individual colours and accessories

Minimum sales unit

7076	001	Square pastel, White	6
	009	Square pastel, Black	6
	033	Square pastel, Golden ochre	6
	036	Square pastel, Golden ochre	6
	045	Square pastel, Vandyke brown	6
	046	Square pastel, Cassel earth	6
	047	Square pastel, Bistre	6
	064	Square pastel, Medium russet	6
	065	Square pastel, Russet	6
	066	Square pastel, Raw russet	6
	407	Square pastel, Sepia	6
	408	Square pastel, Dark sepia	6
176	304	Kneadable eraser	5
177	304	Blending stump, length 70mm	5
776	496	Natural soft medium charcoal	5
	509	Soft synthetic charcoal pencil	10
	491	Soft White pastel pencil	10
777	264	TECHNOGRAPH graphite pencil, 4H	12
	263	TECHNOGRAPH graphite pencil, 3H	12
	262	TECHNOGRAPH graphite pencil, 2H	12
	261	TECHNOGRAPH graphite pencil, H	12
	260	TECHNOGRAPH graphite pencil, F	12
	250	TECHNOGRAPH graphite pencil, HB	12
	251	TECHNOGRAPH graphite pencil, B	12
	252	TECHNOGRAPH graphite pencil, 2B	12
	253	TECHNOGRAPH graphite pencil, 3B	12
	254	TECHNOGRAPH graphite pencil, 4B	12
	255	TECHNOGRAPH graphite pencil, 5B	12
	256	TECHNOGRAPH graphite pencil, 6B	12
779	250	TECHNALO water-soluble graphite pencil, HB	12
	251	TECHNALO water-soluble graphite pencil, B	12
	253	TECHNALO water-soluble graphite pencil, 3B	12
780	250	GRAFSTONE pure graphite pencil, HB	12
	253	GRAFSTONE pure graphite pencil, 3B	12
	256	GRAFSTONE pure graphite pencil, 6B	12

Assortments

Minimum

- | | | | |
|-----|-----|------------------------------------------------------------------------------------------------------------------------------------------------------------------------------------------------------------------------------------------------------------------------------------------------------------------------------------------------------------------------------------------------------------------------------|---|
| 776 | 310 | Sets of 6 hard dry pastels (White, Burnt Sanguine, Natural Sanguine, Bistre, Sepia and Black),
2 Neocolor I half-length pastels (White & Black)
1 kneadable eraser
1 blending stump | 5 |
| 776 | 314 | Set of dry pastels and top-quality pencils, containing:
3 hard dry pastels (Burnt Sanguine, Bistre and Sepia)
4 sticks of natural charcoal
1 Technograph graphite pencil B
2 Technalo water-soluble graphite pencils (3B and B)
1 Synthetic charcoal pencil
1 Soft White pastel pencil
2 Neocolor I half-length pastels (White & Black)
1 kneadable eraser
1 blending stump
1 pencil sharpener | 3 |



776.314



776.310





Bright and intense colours

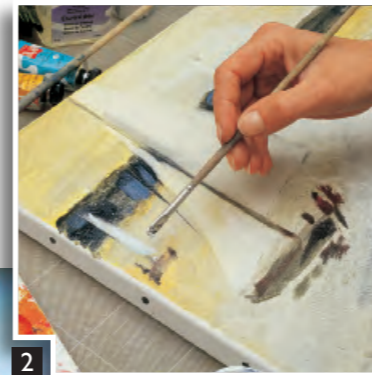
Excellent lightfastness

Ground in natural vegetable oils

- Superior-quality Oil paints recommended for amateur artists and for teaching painting.
- The colours are prepared in the traditional way - they are ground in vegetable oils. These give the colours their mixing stability and lightfastness.
- 36 colours in 40 ml tubes, available in sets or individually.
- Also a range of Caran d'Ache medium and fast-drying varnishes.
- Economical in use.
- Bright and intense colours.
- Opaque or semi-opaque.
- Excellent lightfastness.
- Suitable for many painting techniques on various materials (paper, cardboard, canvas, a.s.o.).

For colour availability and assortments, see colour chart.

Underpainting: rub pure or diluted colour onto the canvas with a cloth or a brush.

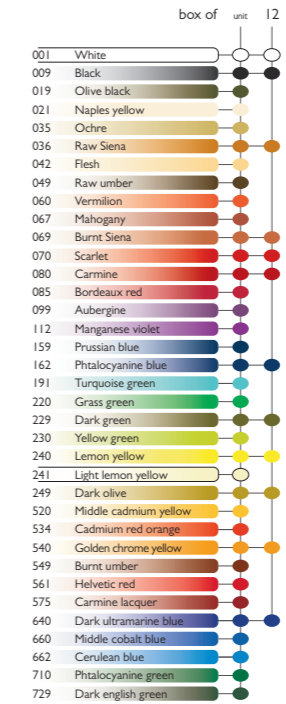


Other layers: to work on top of fresh paint, mix the colour with a painting medium. You can work from light to dark or the opposite. To restart work on an already painted surface, remove the fresh colour and blend with the adjacent areas.



Glazing: to create transparent layers or running effects, dilute the oil with a painting medium or linseed oil. Apply with a brush, a spatula, a palette knife, fingers, or a rag. A drying oil will speed up the drying of the painting.

OIL COLOURS CHART



Assortments	Minimum
2600. 412 Cardboard box of 12 tubes, 40 ml	1
Individual colours	
2600. ... Tubes of 40 ml	2
Accessories	
901. 001 Gloss Picture Varnish (final varnish) – 75 ml	1
901. 002 Retouching Varnish (restores temporarily the picture) – 75 ml	1
901. 003 Courtrai drier (reduce the drying time) – 75 ml	1
901. 004 Painting Medium (used to thin the consistency of oils) – 75 ml	1
901. 005 Clarified Linseed Oil (improve the flow of colours) – 75 ml	1



2600.412



901.001 901.002 901.003 901.004 901.005

Highly workable thermoplastic paste with a wax base

Never dries out or becomes hard

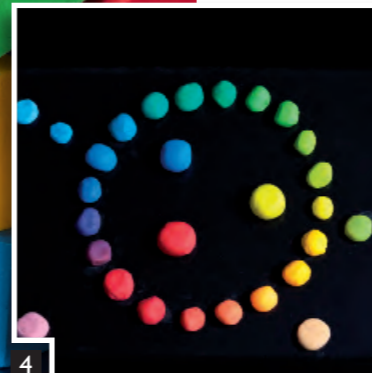
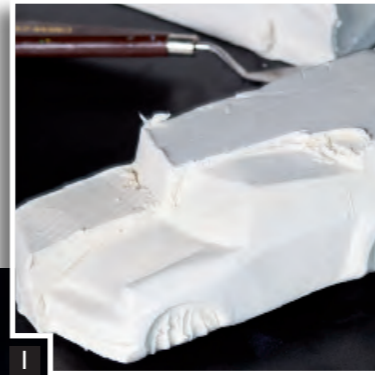
An infinite range of possibilities for three-dimensional artistic creations

- Ideal for artistic modelling, design, architecture, and animated films as well as for teaching and art physiotherapy.
- Stable up to 55°C and water-resistant.
- Ready to use and 100% reusable.
- Ideal choice of colours for teaching colour-mixing (570, 740, 670, 720, 300), and others intended for modelling and artistic sculpture (901, 496, 497, 542, 808).
- 10 brilliant colours available in 1 kg blocks.
- Adheres to any kind of support (paper, wood, cardboard, canvas, stone, metal etc...).

For colour availability and assortments, see colour chart.



Modelling by removing material: sculpt from a block using a spatula to trace the outlines of the basic shape then cut away material as required.



MODEL'ART COLOURS CHART

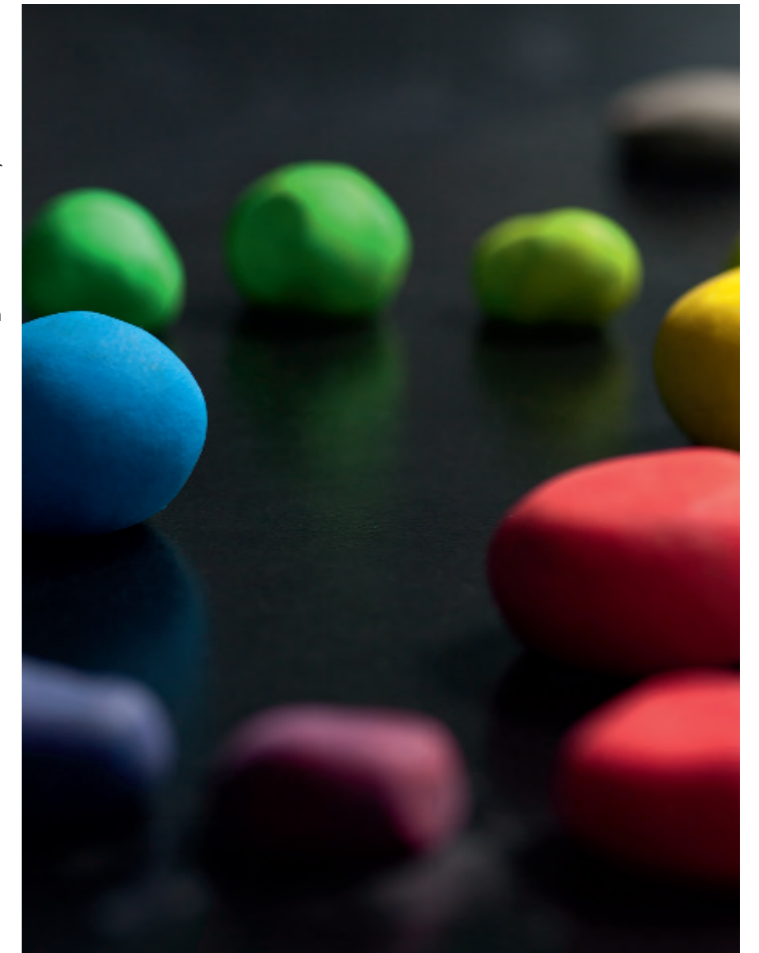
blocks of 1 kg

300	Fast orange
496	Ivory Black
497	Bronze
542	Light flesh 10%
570	Red lake safflower
670	Permanent Blue
720	Bright Green
740	Yellow gamboge
808	French grey
901	Chinese White

Tools: structure and shape the piece with knives, chisels, spatulas, gouges, hammers, etc. A Model'Art piece can be retouched or altered at any time.

A picture in relief: with the fingers, apply touches of Model'Art onto canvas or glass and spread it around. To create a relief picture, use Gouache or Acrylic, then cover it with a coating of rubber lacquer diluted in alcohol. The surface of the picture can be smoothed with a brush dipped in turpentine.

Colour mixing: play with the colours by mixing the primary colours to produce the secondaries. Add black or white to create lighter or darker shades, etc.



Assortments	Minimum
Individual colours	
258. ... 1kg blocks	1

258.497

258.542

258.570

258.740



Hobbies

Dream of the world, recount his emotions with a single stroke, invent, experiment... A young artist draws like he breathes, expresses himself and is inspired thanks to colour, drawn by a limitless imagination.

Absolutely free, totally spontaneous, he plays with techniques by instinct, with no aim other than his own pleasure, with no constraint other than his creativity.

From the first pencil to the tube of gouache, from the generous selection received as a gift to the felt-tips for school, the Maison Caran d'Ache assists in every stage of exploring the world of shapes and colours with top-quality products specially designed for young artists.

Generations of children in Switzerland and all over the world have had the chance to learn to draw, paint or colour in using products manufactured by craftsmen in the Maison Caran d'Ache Geneva workshops.

As adults, they wish to offer their children the best of colour, quality tools suitable for their age, attractive and fun to develop their sense of beauty, their creativity and their talent.



PENCILS

Prismalo®	40-41
Fancolor pencils	42-43

PASTELS

Neocolor® I	44-45
Neocolor® II Watersoluble	46-47

PAINTS

Acrylic	48-49
Studio Gouache	50-51
Studio liquid Gouache	52-53

FIBRE-TIPPED PENS

Fibralo® fibre-tipped pens	54-55
Fancolor fibre-tipped pens	54-55
Fibre-tipped pens Metallic	54-55



The first water-soluble colour pencil since 1931

Thin lead allowing a clear and precise trace

High pigment concentration

- Water-soluble colour pencils for artistic drawing, illustrations, graphic art, art tuition.
- Best cedar.
- Certified FSC Forest Stewardship Council
- 80 colours, also available individually.
- Lead: thin strong water-soluble leads, Ø 2.95 mm, excellent lightfastness.
- Shaft: hexagonal, end-sealed, with name and colour code.
- Product conforms to EN71 (CE).
- Techniques: watercolour effects, wash technique, crosshatching, mixed media - can be combined with Pablo water-resistant colour pencils, Neocolor pastels and Gouache.

For colour availability and assortments, see colour chart.

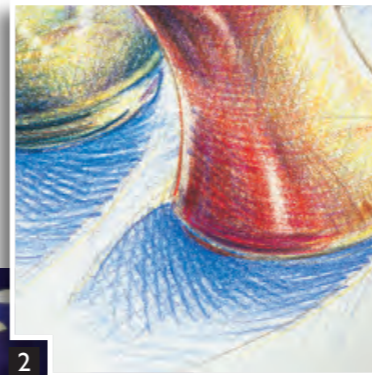


In 1931 Caran d'Ache invented PRISMALO® Aquarelle, the first colour pencil which revolutionised the world of design and colour with its watercolour effects. For more than 80 years this range of pencils, entirely produced in our Geneva workshops, has demonstrated its Swiss Made quality around the world. PRISMALO® has been used by several generations of schoolchildren as well as by countless amateur and professional artists who appreciate the precision made possible by their fine, hard leads.



The mark of responsible forestry

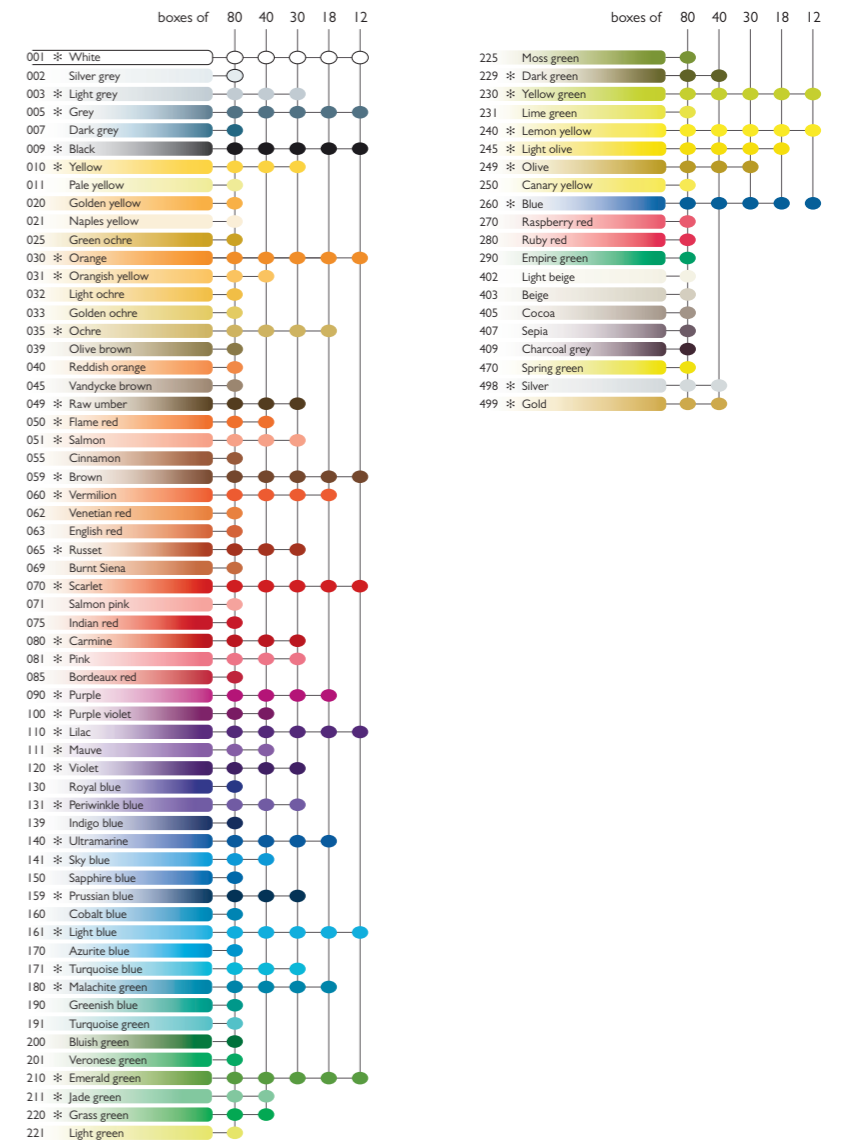
Washes, watercolouring and dot method: work the drawing with a moist brush. Pick up the colours from a paper palette you have prepared in advance. Apply the colours with the wetted pencil tip.



Hatching, writing, lightening: the hard lead allows precision drawing as well as layering and writing. Apply dark colours first, then light ones on top. Metallic colours are particularly vibrant.



PRISMALO® Aquarelle COLOUR CHART



Check out the PRISMALO gift box on page 59.

Assortments	Minimum
999. 306 Plastic box of 6 colours	10
312 Metal box of 12 colours	5
318 Metal box of 18 colours	5
330 Metal box of 30 colours	5
340 Metal box of 40 colours	3
380 Metal box of 80 colours	1
999. . . Individual colours 1-40 *	12
. . . Individual colours 41-80	3
999. 300 Bicolor pencil red and blue	12
999. 480 Wooden gift box 80 colours (see gift pages)	1



999.380



999.340



999.330



999.318



999.312



999.306



999.300



Water-soluble pencils

Soft yet strong lead

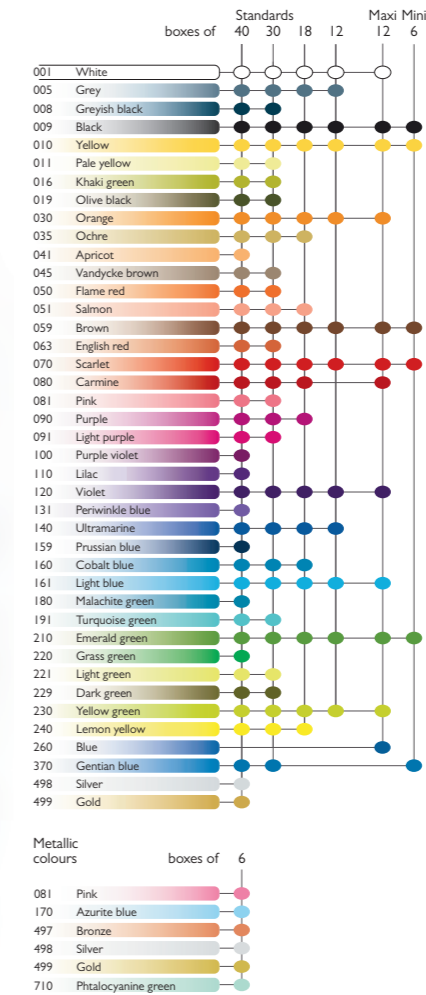
Water-based varnish

- Colour pencils, water-soluble, standard and thick diameter.
- Shaft: hexagonal.
- Certified FSC Forest Stewardship Council
- Product conforms to EN71 (CE).
- Techniques: crosshatching, graded applications, watercolour effects, washes, unlimited blending possibilities, mixed media - can be combined with Neocolor pastels and Gouache.

For colour availability and assortments, see colour chart.



FANCOLOR PENCILS COLOUR CHART



Discover the gouache and fibre-tipped pens of the new FANCOLOR range pages 50 & 54.

Assortments		Minimum
Colour pencils, Ø 2.8 mm		
1288.	312 Metal box of 12 colours	10
	318 Metal box of 18 colours	5
	330 Metal box of 30 colours	5
	340 Metal box of 40 colours	3
1284.	406 Cardboard of 6 metallic colours	10
1286.	706 Cardboard box of 6 colours, ½ pencils	10
Thick pencils, Ø 6 mm		
498.	712 Cardboard box Eurohanger of 12 colours	10



1288.340



1288.330



1288.318



1288.312



1284.406



1286.706



498.712



Homogeneous colours allowing uniform tinted areas

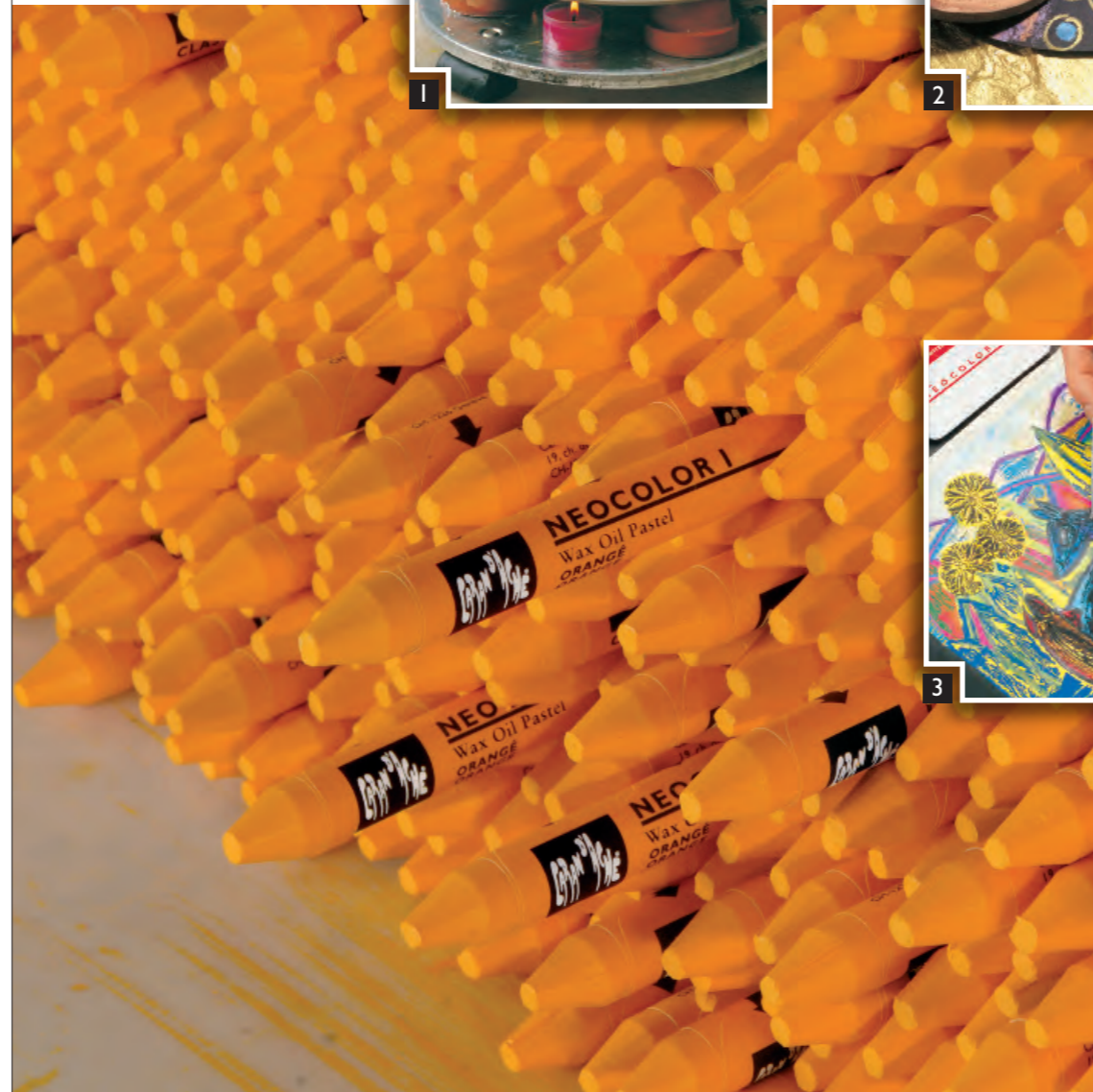
High pigment concentration

Possibility of overlay of tints

- Superior-quality artists' pastels for the most exacting requirements: artists, illustrators, graphic art, art tuition.
- Recommended for creative (craft) activities.
- 60 colours, also available individually.
- Water-resistant artists' pastels, soft and easy to work, very economical thanks to their exceptional covering power, excellent lightfastness.
- Product conforms to ASTM D4236 (AP for USA only).
- Techniques:
 - Usable on various materials: paper, cardboard, glass, wood, leather, fabric, stone, a.s.o...
 - Soluble in turpentine (spirits of turpentine).
 - Encaustic on hot metal.
 - Can be combined with Neocolor II Watersoluble.

For colour availability and assortments, see colour chart.

Encaustic: place a sheet of heavy paper on a heated surface. Draw with Neocolor I, allowing the pastel to melt. Work in any remaining bits with a spatula.

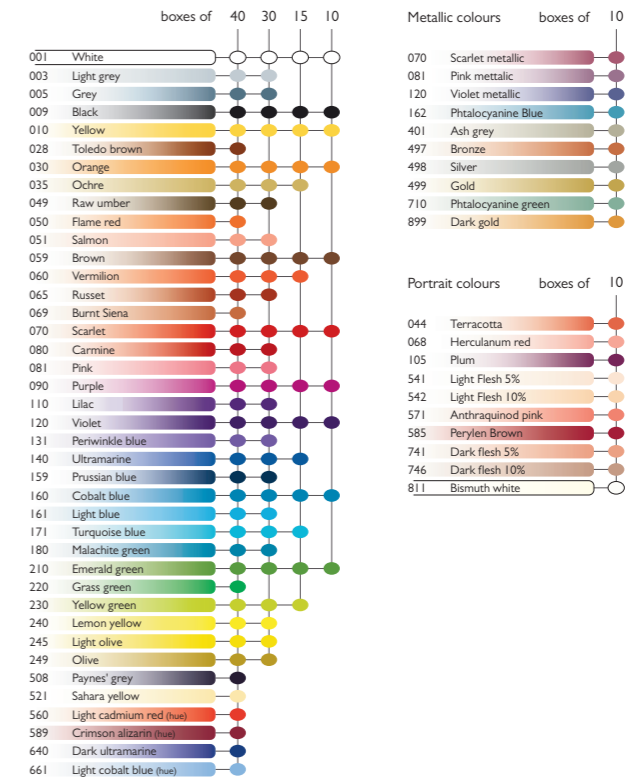


Neocolor I, particularly the metallic colours, gives good, luminous coverage even on dark paper.



Scraping: apply a thick layer of clear Neocolor I onto smooth paper. Cover it with a thin layer of Acrylic. Let it dry then scrape back the surface to create the design required.

NEOCOLOR® I COLOUR CHART



Special edition

In 1952, Caran d'Ache launched NEOCOLOR® I, the water-resistant wax pastel which revolutionised the teaching of drawing. To celebrate the 60th anniversary of this unique pastel, Caran d'Ache is releasing this unmissable, retro-design gift box.



Assortments	Minimum	
7000. 310	Metal box of 10 colours	10
7000. 315	Metal box of 15 colours	5
7000. 330	Metal box of 30 colours	5
7000. 340	Metal box of 40 colours	3
7004. 310	Metal box of 10 metallic colours	10
7000. 810	Metal Box of 10 portrait colours	10
7000. ...	Individual colours	10
7004. ...	Individual colours, Metallic	10
Accessories		
911. 000	Special fixative for wax and oil drawings. Spray the work with a thin coat of Protector.	6
913. 000	Spray for pencils, charcoals and dry pastel (400 ml)	6
12. 009	Metal pastel holder, hexagonal	6
450. 000	Scraper	10





The widest range of wax-based water-soluble pastels on the market

High pigment concentration for bright and opaque colours

- Superior-quality water-soluble artists' pastels for the most exacting requirements: artists, illustrators, graphic art, art tuition.
- 126 colours, also available individually.
- Water-soluble artists' pastels, soft and easy to work, strong bright colours, very economical thanks to their exceptional covering power, excellent lightfastness.
- Product conforms to ASTM D4236 (AP for USA only).
- Techniques:
 - Dry or wet drawing on all materials
 - Watercolour effects, washes, scraping out
 - Suitable for use on (illuminated) signs and panels

For colour availability and assortments, see colour chart.

Rainbow technique: pick up the graded colours from a smooth palette and place the brush flat on the paper.

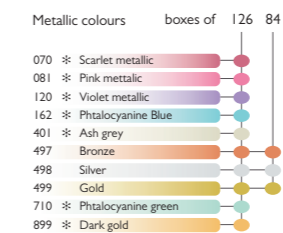
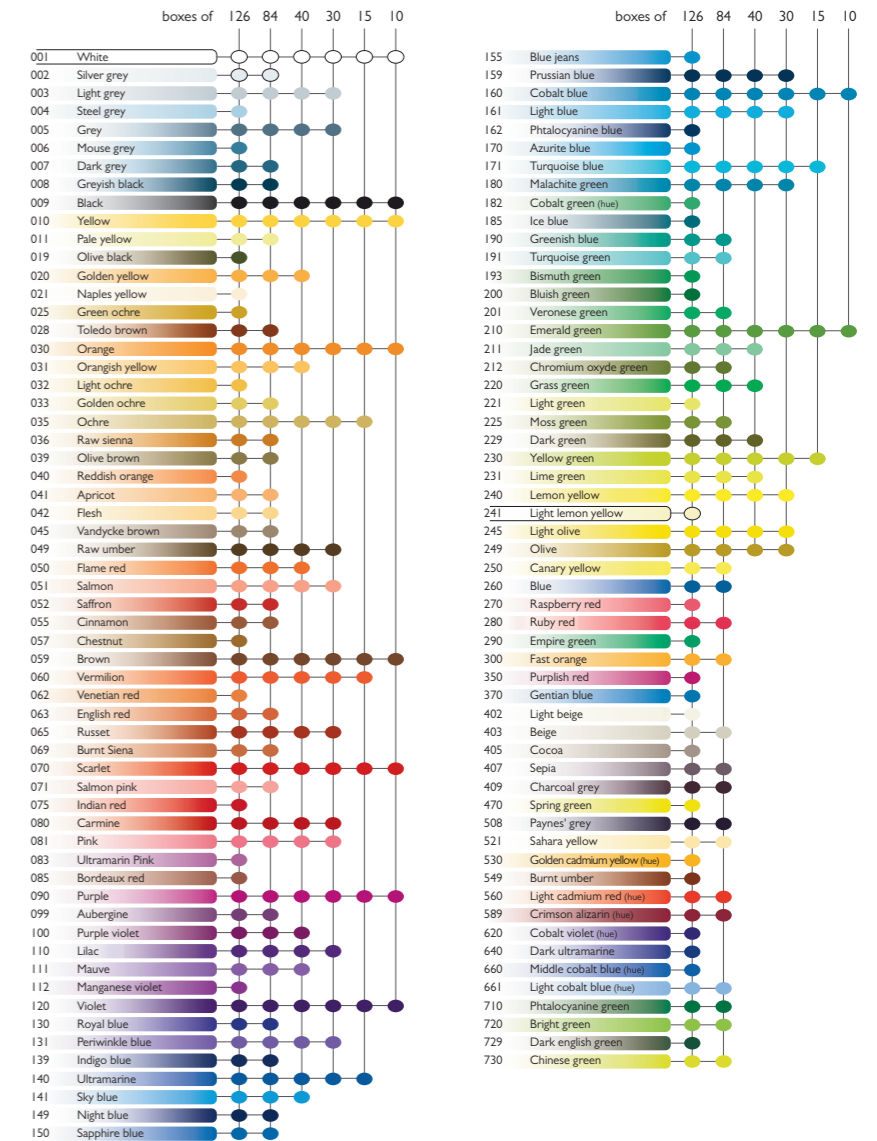


Watercolours: make a sketch, sprinkle it with water and allow the colours to dilute. Pick up colours from a palette and paint in wet as watercolour. Apply Neocolor II onto smooth paper and spread it onto the design with a stiff brush.



Wash and varnish: hold the pastel flat and draw on moistened paper. Colour the design with a brush full of Neocolor II. Cover the dry layers with a transparent layer.

NEOCOLOR® II COLOUR CHART



Check out the Neocolor II gift box on page 61.



Assortments	Minimum
7500. 310 Metal box of 10 colours	10
315 Metal box of 15 colours	5
330 Metal box of 30 colours	5
340 Metal box of 40 colours	3
384 Metal box of 84 colours	1
426 Metal box of 126 colours + accessories	1
484 Wooden case of 84 colours (see gift pages)	1
7500. ... Individual colours	10
7504. ... Individual metallic colours *	10
Accessories	
911. 000 Special fixative for wax and oil drawings. Spray the work with a thin coat of Protector.	6
913. 000 Spray for pencils, charcoals and dry pastel (400 ml)	6
12. 009 Metal pastel holder hexagonal	6





Water-base paint that adheres to any surface

Uniform satin-finish look

Smoothness and flexibility

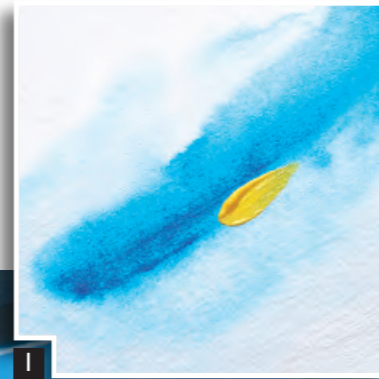
Very good UV resistance

- Water-based acrylic paint, easy to use, requires no preparation.
- Economical, due to high pigment concentration.
- 30 brilliant colours including 3 iridescents.
- Ideal for all kinds of material: fabric, canvas, paper, cardboard, glass, plastic, metal, wood.
- 250 ml tubes.

For colour availability and assortments, see colour chart.



Watercolour technique: a strongly diluted transparent film of paint produces the finest water effects. Acrylic dries to a waterproof finish and is suitable for decorating a wide variety of surfaces. Use the iridescent colours for festive effects.



Acrylic is suitable for use on an extremely wide range of supports including transparent foil, glass, paper, cardboard, painting canvas, fabric, metal, concrete, a.s.o. When diluted to the liquid state, Acrylic can be sprayed or airbrushed. Painted fabrics can be washed at 60°C (140°F).

Acrylic can be mixed with various additives: such as sand, loose earth or starch paste. Apply the mixture onto the support with a brush, flat piece of wood or painting knife. Acrylic will adhere to almost any support including paper, cardboard, canvas, a.s.o. Thanks to the flexibility of the paint film, Acrylic can also be applied thick for impasto effects.

ACRYLIC COLOUR CHART

Basic colours	tubes 250 ml	pigments	UV	○
001 White		(PW6)	***	■
003 Light grey		(PBk7/PB15:3)	***	■
009 Black		(PBk7)	***	■
020 Golden yellow		(PY1/PO5)	***	□
030 Orange		(PY83/PO5)	***	□
035 Ochre		(PY42/PY1)	***	■
036 Raw sienna		(PY42/PR101/PBk7)	***	■
042 Flesh		(PO5/PY1/PB15:3)	***	■
050 Flame red		(PO13/PY3)	***	■
060 Vermilion		(PY3/PR2/PO13)	***	■
069 Burnt sienna		(PR101/PY83/PBk7)	***	■
070 Scarlet		(PR254)	***	□
080 Carmine Lake		(PR57:1)	***	■
081 Pink		(PR210)	**	■
090 Magenta		(PR122/PR169)	**	■
109 Brown madder lake		(PR2/PBk7/PY3/PO13)	***	□
120 Violet		(PV23)	***	■
149 Night blue		(PB60)	***	■
159 Prussian Blue		(PB15:3/PV23/PBk7)	***	■
170 Cyan		(PB15:3)	***	■
171 Turquoise blue		(PB15:3/PG7/PW6)	***	■
210 Emerald green		(PG7)	***	■
220 Grass Green		(PG7/PY3)	***	■
240 Lemon yellow		(PY3/PY74)	***	■
470 Spring green		(PG7/PY3)	***	■
640 Dark Ultramarine		(PB29)	**	■
720 Bright Green		(PG7/PY3)	***	■

Iridescent colours	tubes 250 ml	pigments	UV	○
497 Bronze			***	■
998 Silver			***	■
999 Gold			***	■

Lightfastness UV/100h	Excellent	Very good	Good
***	***	***	***
**	**	**	**
*	*	*	*
○	○	○	○

Opacity	Transparent	Semi-opaque	Opaque
□	□	■	■



Assortments	Minimum
2810. ... Basic colours 250 ml tube, 24 colours	5
2813. ... Primary colours 090 Magenta red 170 Cyan 240 Prim. yellow 250 ml tube	5
2812. ... Iridescent colours 497 Bronze 998 Silver 999 Gold 250 ml tube	5



2810...



2813...



2812...



Plasticizer-free formula with a natural vegetal based binder

Gouache with a velvet-feel, which does not form cracks

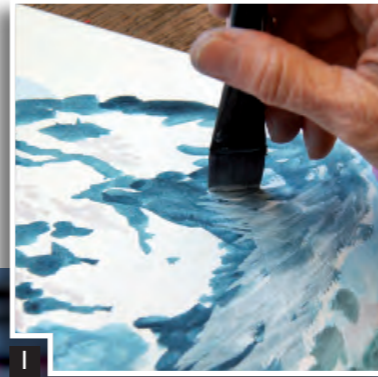
Possibility to obtain watercolour effects

- New metal box more environment-friendly and practical
- Bright colours, good lightfastness levels and economical in use thanks to a high pigment concentration.
- Studio quality recommended for amateur artists and school use.
- Available in assorted boxes and individual colours.
- Tubes: 23 colours.
- Cakes: 15 colours.
- The manufacturing process by drying of the mass ensures an unrivalled thick buttery consistency.
- Product conforms to EN71 (CE)
- Techniques: opaque and transparent painting. Easy colour blending.

For colour availability and assortments, see colour chart.

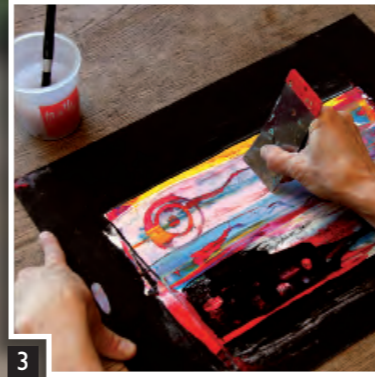


Watercolour effects or a thick surface texture can be obtained depending on the amount of water used. Create special effects with a brush, sponge or cotton bud, a.s.o.



2

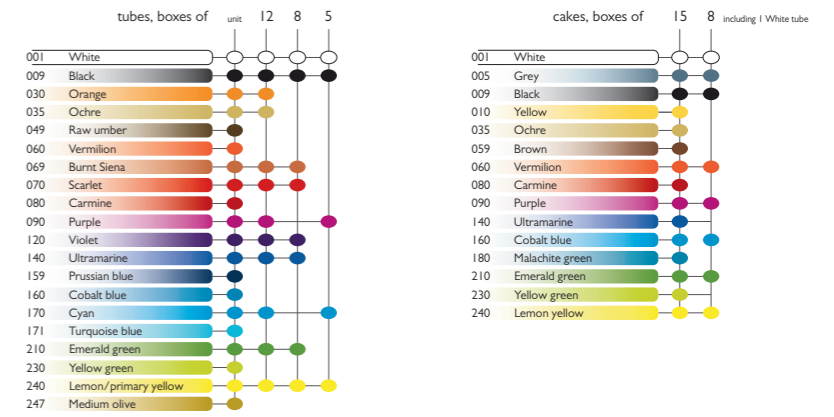
Paper batik: combine *Gouache* with *Neopastel* oil pastels.



3

Water-based designs: apply different patches of colour and work them with a flat piece of wood or painting knife. Thin films of paint produce stunning swirls of colour. Draw a design with water on your painting and scrape away the top layer.

GOUACHE STUDIO COLOUR CHART



GOUACHE FANCOLOR COLOUR CHART



1000.715

Discover the coloured pencils and fibre-tipped pens of the new FANCOLOR range pages 42 & 54.



2103...

2100...

2001...

1000...

1003...

Assortments		Minimum
Tubes 10 ml		
2001. 312	Metal box of 12 colours, 1 brush	5
408	Plastic box of 8 colours, 1 brush	5
Individual colours		
2001. ...	Plastic box of tubes 10 ml	5
2100. 001	Cardboard box of white tubes, 21 ml	5
2100. 009	Cardboard box of black tubes, 21 ml	5
Primary colours		
2103. ...	Cardboard box of tubes, 21 ml	
090	Magenta red 170 Cyan 240 Prim. yellow	5
2003. 305	Cardboard box of 5 tubes, 10 ml	
	magenta red, cyan, yellow, black, white	1
2103. 305	Cardboard box of 5 tubes, 21 ml	
	magenta red, cyan, yellow, black, white	1
Cakes		
1000. 308	Metal box, shock-resistant, 7 colours, 1 white tube, 1 brush	5
315	Metal box, shock-resistant, 14 colours, 1 white tube, 1 brush	5
715	FANCOLOR Metal box, 14 colours, 1 white tube, 1 brush	5
Individual colours		
1000. ...	Cardboard box of cakes	12
Primary colours		
1003. ...	Cardboard box of cakes	
090	Magenta red 170 Cyan 240 Prim. yellow	12



2001.312



2001.408



2003.305



2103.305



1000.315



1000.308



STUDIO LIQUID GOUACHE COLOUR CHART

Water-based paint with natural binders

Gouache with a velvet-feel, which does not form cracks

Intense and opaque colours

- Economical in use thanks to a high pigment concentration.
- Excellent lightfastness.
- Paint ready to use.
- 27 colours + 3 primary colours, pump dispenser, contents 250, 500 and 1000 ml; tube content 125 ml
- Usable on a wide range of supports: paper, cardboard, fabric, leather, metal, a.s.o.
- Product conforms to EN71 (CE).

For colour availability and assortments, see colour chart.



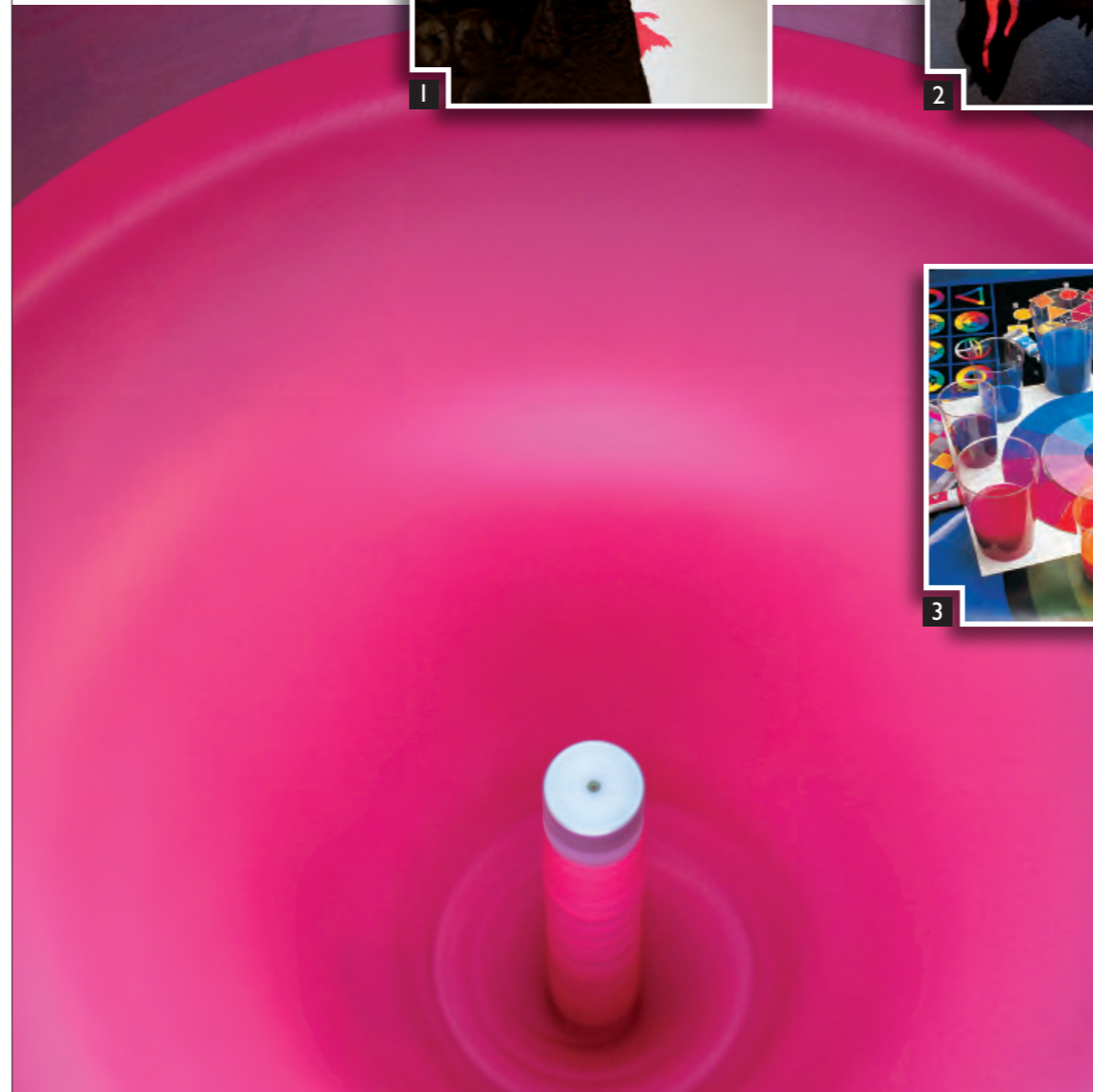
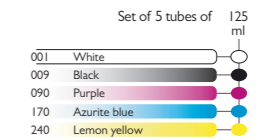
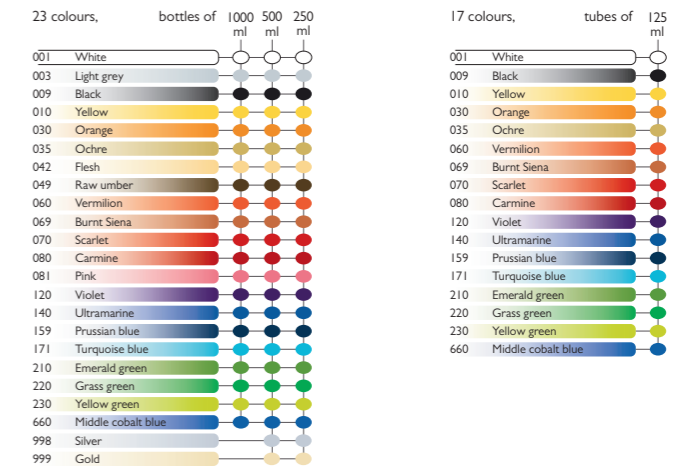
Wash: paint a subject in light Gouache colours applied opaquely. Overpaint this with waterproof Indian ink.



Work the result with water.



Best mixes are obtained using perfectly matched primaries as shown on the Ostwald colour circle.



Assortments		Minimum
Basic colours		
2320. ...	Tube 125 ml, 17 colours	
2310. ...	Pump dispenser 250 ml, 23 colours	
2350. ...	Pump dispenser 500 ml, 23 colours	
2300. ...	Pump dispenser 1000 ml, 21 colours	
Fluorescent colours		
030 Orange 090 Purple 230 Yellow green 240 Lemon yellow		
2351. ...	Pump dispenser 500 ml	
Primary colours		
090 Magenta red 170 Cyan 240 Prim. yellow		
2323. ...	Tube 125 ml	
2313. ...	Pump dispenser 250 ml	
2363. ...	Pump dispenser 500 ml	
2303. ...	Pump dispenser 1000 ml	
Set of 5 colours (3 primary colours + Black + White)		
2320. 405	Tube 125 ml	
Accessories		
2360. 500	Pump dispenser (new model, large wide neck)	



2320.405



2320. ...



2360.500



2300. ...

2310. ...

2350. ...



Bright and transparent colours

Great length of writing (> 600 meters)

Does not dry out for up to one week with lid left off

Washable

- Superior quality, 3-year storage guarantee against drying out.
- Recommended for sketching out rough drafts, drawing instruction, and colouring.
- Water-based ink, water-soluble, ink does not penetrate the paper, washable on most modern fabrics.
- Product conforms to EN71 (CE).

FIBRALO®

- Fibre-tipped pens with medium-size point.
- 30 colours, also available individually.

FANCOLOR

- Fibre-tipped pens with medium or maxi size point.
- Food-based colours

METALLIC

- 3 luminous colours, covering power.
- Water-based ink.

For colour availability and assortments, see colour chart.

Beam and wash tint techniques: draw with several felt tips united in a beam. For water colour effects, wet and shade off. The stroke fuses, shines even more and acts like colour ink. Beautiful contrasts appear, due to the diffusion effect.



Sketching and colouring:

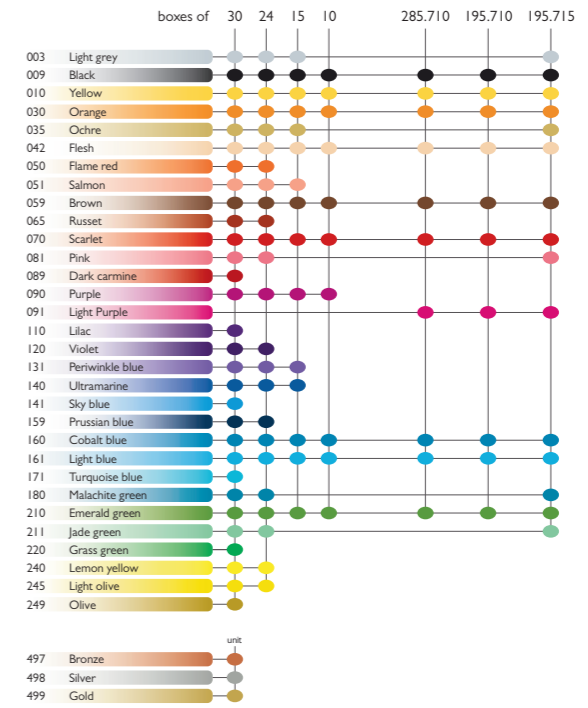
the *Fibralo* and *Fancolor* are ideal for architecture and concept sketching. The trait is clear and saturated, delivering the typical felt tip characteristics, specific to drawing.

For colouring in, apply the colour onto a non-absorbent surface and paint with a damp paint brush to realise a watercolour effect.



Stencils: follow the contours of your ready-cut stencil, with *Fibralo* or *Fancolor* felt tips. Remove the stencil and blur out the traits with a humid paint brush.

FIBRALO® & FANCOLOR Fibre-tipped pens COLOUR CHART



Assortments	Minimum
185. 310 Metal box of 10 colours	10
285. 315 Metal box of 15 colours	5
324 Metal box of 24 colours	5
330 Metal box of 30 colours	5
Individual colours	
185. ... Wallet of pens	10
285. 497 Fibre-tipped pen Metallic bronze	10
285. 498 Fibre-tipped pen Metallic silver	10
285. 499 Fibre-tipped pen Metallic gold	10
285. 103 Cup 30 fibre-tipped pens gold silver bronze	1
FANCOLOR Fibre-tipped pens, standard diameter (Ø 2,5 mm)	
285. 710 Plastic wallet of 10 colours, water-soluble	5
FANCOLOR Fibre-tipped pens, thick diameter (Ø 2,8 mm)	
195. 710 Plastic wallet of 10 colours, water-soluble	5
715 Plastic wallet of 15 colours, water-soluble	5



Discover the coloured pencils and gouache of the new FANCOLOR range pages 42 & 50.



Gifts

Imagine a treasure...

A box delicately opened to unveil a whole world of colours, materials and the smell of wood, wax and oil.

Caran d'Ache has created its superb presentation boxes with the joy of every Fine-Arts enthusiast - small or large designer - receiving this gift in mind.

The entire Fine-Arts spirit is concentrated in this collection of ideas for top-quality gifts. From the child starting out to the seasoned artist, the pleasure of discovery is total, like a promise of never-ending creations.

The various Caran d'Ache product selections for drawing and painting offer a true journey into the heart of colour. Every artist can thus explore the infinite shades of colours and the different techniques in total freedom.

Pencils, pastels, paint and accessories - so many boxes to give, all from the expertise of Caran d'Ache, Maison de Haute Ecriture.



DISCOVERY

Wooden boxes	58
Multiproduct wooden boxes	58

PENCILS

Supracolor® Soft wooden box	59
Pablo® wooden box	59
Prismalo® wooden box	59
Supracolor® Soft + Pablo® box NEW	59
Luminance 6901® wooden box	60
Museum Aquarelle wooden box NEW	60
Pastel Pencils wooden box	60
Graphite Line gift box	60

PASTELS

Neoart™ Aquarelle wooden box	61
Neopastel® wooden box	61
Neocolor® II wooden box	61



3000.424



1285.430



185.824



3002.460



3002.480



3002.470



3888.920



3888.480



3000.460



666.920



999.480

Assortments

Minimum

3002.	460	30 Supracolor Soft + 30 Pablo wooden box	1
3002.	480	40 Neocolor II + 40 Neocolor I wooden box	1
3002.	470	30 Prismalo + 40 Neocolor II wooden box	1
3000.	424	Multiproduct wooden box: 12 SWISSCOLOR water-soluble pencils, 12 NEOCOLOR II water-soluble pastels, 2 GOUACHE STUDIO tubes (Yellow 010 and Red 070), 1 brushes N°5	1
1285.	430	30 Swisscolor wooden box	1
185.	824	24 Fibralo wooden box	1

Assortments

Minimum

3888.	920	120 Supracolor Soft water-soluble colour pencils	1
	480	80 Supracolor Soft water-soluble colour pencils	1
666.	920	120 Pablo water-resistant colour pencils	1
999.	480	80 Prismalo colour pencils	1
3000.	460	80 Supracolor Soft + 80 Pablo wooden box	1



6901.476



788.484



3510.476



3000.415



7500.484



7300.460



7400.996



7400.415

	Assortments	Minimum
6901. 476	80 Luminance 6901® (76 colours + 4 doubled colours), 2 Full Blender-Bright, 2 Grafwood	I
3510. 476	80 Museum Aquarelle pencils (76 colours + 4 doubled colours), 3 Technalo, 1 Grafwood	I
788. 484	Pastel Pencil 84 pieces in wooden gift box	I
3000. 415	15 Grafwood pencils, 3 Technalo pencils, 3 Grafcube 10mm, 3 Grafcube 15mm, 1 sharpening small board, 1 stump, 1 double pencil sharpener, 1 Technik Eraser	I

	Assortments	Minimum
7500. 484	84 Neocolor II water-soluble wax pastels	I
7300. 460	60 Neoart Aquarelle wax-pastels	I
7400. 996	Neopastel oil pastels, 96 colours in wooden gift box	I
7400. 415	Neopastel oil pastels, 15 colours in wooden gift box	I



Other products

No detail should be left to chance...

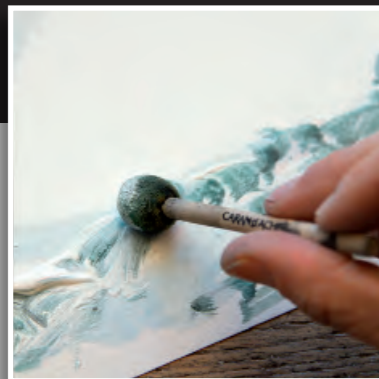
Get the best results from a pencil by sharpening it perfectly. Give a drawing more depth by using the ideal kind of paper. Even out the colours or preserve a work by applying a fixative. Each technique needs the right accessory to release its full creative potential.

Ranging from brushes to mediums, from erasers to papers, Caran d'Ache accessories help to bring out all the artistic qualities of its products.

The Geneva Company has developed accessories to complement its paints, pastels and colour or graphite pencils. They perfect the application, enhance the beauty of the work... and leave no detail to chance.



Graphite pencils.....	NEW 64-65
Special pencils.....	NEW 66
Marking crayons	66
Mechanical pencils & leads	67
Sharpening machines & erasers	68
Drawing material	NEW 69
Brushes & mediums	70
Drawing pads & notebooks	NEW 71



Graphite pencils, superior-quality leads

Best Cedar

For artistic and technical drawing, office and school use

- Grafwood: extra-fine graphite pencils, 15 graduations from 4H to 9B.
- Technalo: water-soluble lead. 3 hardness degrees HB-B-3B, available in cardboard box as well as individually. Excellent for sketching out paintings and for wash drawings.
- Black Wood: maxi graphite pencil, HB hardness degree, black matt varnish, large diameter lead Ø 4.5 mm
- Grafstone: pure graphite, 3 hardness degrees HB-3B-6B, available individually. Excellent for sketching.
- Technograph: 12 hardness degrees from 6B to 4H, available in metal box as well as individually.
- Swiss Wood: HB hardness degree, beech wood from Swiss Jura forest, matt water-based varnish, red cap decorated with a Swiss cross.

As part of its commitment for a sustainable development, Caran d'Ache has progressively FSC® certified some of its graphite pencils: Swiss Wood, Technalo, Technograph, Edelweiss, Natura and the pencil with eraser 351.



GRAFIK

The new collection of trendy pencils with a feel that will surprise you.

Its geometric design is matched by its vibrant colours. It's great to look at, great to hold.

Eccentric, pop, graphic ... whatever your style, the Grafik experience is for you.

- Graphite pencils
- New dimension of design in relief
- Superior quality, HB lead (Ø 2.1 mm)
- Best wood
- Water-based varnish
- FSC® Forest Stewardship Council Certified



An original technology for this new generation of graphite pencils all in relief.



The mark of responsible forestry

Assortments		Minimum															
		4H	3H	2H	H	F	HB	B	2B	3B	4B	5B	6B	7B	8B	9B	
775.	... Grafwood, extra-fine graphite pencils, Ø 7.5 mm, from 2.1 to 3.6 mm Ø lead	264	263	262	261	260	250	251	252	253	254	255	256	257	258	259	3
Technalo, graphite pencil, hexagonal, water-soluble, 3 mm Ø lead																	
779.	... Separate hardness degrees						•	•									12
779.	406 Cardboard of 6 ass. pencils						•	•		•							1
780.	... Grafstone, pure graphite pencil, Ø 7 mm, box of 12						250			253			256				12
499.	272 Black Wood, HB graphite pencil, 4.5 mm Ø lead																12
Technograph, graphite pencil, hexag. water-resistant Ø 7 mm, 2.1 to 3.2 mm Ø lead																	
777.	... Separate hardness degrees,	264	263	262	261	260	250	251	252	253	254	255	256				12
777.	312 Metal box of 12 ass. pencils	•	•	•	•	•	•	•	•	•	•	•	•				5
341.	... Edelweiss, 2.1 mm Ø lead, box of 12			274		273	272			271							10
347.	... Natura, unvarnished wood, 2.1 mm Ø lead, box of 12			274		273	272			271							10
348.	272 Swiss Wood, HB graphite pencil, 2.1 mm Ø lead																10
351.	272 Pencil with eraser HB, 2.1 mm Ø lead																12
342.	112 «Swiss flag» pencil with eraser HB, 2.1 mm Ø lead, plastic mug with 36 pencils																1



Assortments		Minimum	
343.	501 Grafik, HB graphite pencil, blue varnish pink hexagonal, 2.1 mm Ø lead	12	
	502 Grafik, HB graphite pencil, pink varnish purple hexagonal, 2.1 mm Ø lead	12	
	503 Grafik, HB graphite pencil, yellow varnish black square, 2.1 mm Ø lead	12	
	504 Grafik, HB graphite pencil, purple varnish green square, 2.1 mm Ø lead	12	



SPECIAL PENCILS MARKING CRAYONS

- Superior-quality pencils for artistic and technical drawing, office and school use.
- Special-purpose pencils for use on blackboard, slate and wood.
- Best cedar from cultivated plantings.
- Penholder, crayon holder
- Special-purpose crayons
- Grease crayons for marking green or dry wood, glass and metal.
- Water-resistant.



776.491 776.509 541.272 999.300 2152.001 453.000 114.000

201 / 211



12.009



7051.000



7052.000



7153.000



44.009 77.288 3.289 22.288 6077.... 6377....



6077.... 6379....

MECHANICAL PENCILS & LEADS



Fixpencil

- Mechanical pencil with sensitive pushbutton action and patented gripper tip guaranteeing perfect control of the lead.
- Extremely lightweight metal body coated with three enamel layers.
- For leads of Ø 2 mm, 3 mm and 3.8 mm.

Graphite leads

- For Fixpencil mechanical pencils, Ø 2 mm, 3 mm and 3.8 mm.
- Superior-quality leads for artists, graphic artists and illustrators.
- Ø 2 mm Technograph 6077: In packs of 3 or 12 leads, 9 hardness degrees 3B to 4H.
- Ø 3 mm Technograph 6377: In pack of 6 leads, 3 hardness degrees HB-3B-6B.
- Ø 3.8 mm Technalo 6379: Water-soluble leads. Excellent for sketching out paintings and for wash drawings. In pack of 5 leads, 2 hardness degrees B-3B.



Assortments		Minimum
776. 491	Soft White pastel pencil	10
509	Soft synthetic charcoal pencil	10
541. 272	½ pencil	144
999. 300	Prismalo Bicolor (two-colour) pencil red and blue, 3 mm Ø lead	12
Carpenters' pencil, length 250 mm, for dry wood		
201. 273	hard lead, glossy green finish	72
211. 272	medium lead, glossy red finish	72
2152. 001	Jass pencil for slates (card games) 4.5 mm Ø chalk lead	12
453. 000	Extension for round and hexagonal pencils	10
114. 000	Grey plastic penholder	10
12. 009	Metal pencil holder, hexagonal Ø 9 mm	6
Foresters' crayons for green and dry wood, hexagonal, 12 mm Ø, length 10.5 cm		
7051. 000	blue 7053.000 red 7061.000 yellow	10
Round pencils, 9 mm Ø, length 10.5 cm		
7050. 000	graphite 7052.000 blue 7054.000 red 7060.000 black 7062.000 yellow	10
DERMO, special crayons for glass and metal, hexagonal, 12 mm Ø, length 10.5 cm		
7145. 000	white 7151.000 blue 7153.000 red 7161.000 yellow	10

Fixpencil		Minimum
22. 288	For 2 mm Ø leads, black satin finish barrel, with assorted pencil sharpener integrated into pushbutton	10
22. 289	For Ø 2 mm leads, black rough finger grip, assorted pencil sharpener integrated into pushbutton	10
77. 288	For 2 mm Ø leads, black satin finish barrel, long model 160 mm, with assorted pencil sharpener integrated into pushbutton	10
77. 289	For Ø 2 mm leads, black rough finger grip, long model 160mm	10
3. 288	For 3 mm Ø leads, black satin finish barrel, with assorted pencil sharpener integrated into pushbutton	10
3. 289	For Ø 3 mm leads, black rough finger grip	10
44. 009	For 3.8 mm Ø leads, length 155mm, with assorted pencil sharpener integrated into pushbutton	5
Graphite leads		
Technograph Ø 2 mm		
6077. ...	Pack of 12 leads	4H 3H 2H H F HB B 2B 3B 6B 1
6077. ...	Pack of 3 leads	464 463 462 461 460 450 451 452 453 12
Technograph Ø 3 mm		
6377. ...	Pack of 6 leads	350 353 356 1
Technalo Ø 3.8 mm, water-soluble lead		
6379. ...	Cardboard of 5 leads	251 253 5

Sharpening machines

- 456: metal model with replaceable cutter for 4-10 mm diameter pencils and pastels, with tip shape adjustment.
- 466: injected-plastic model for 4-8 mm diameter pencils.

Double pencil-sharpener in red plastic

Erasers

- Superior and standard quality formulated for different paper types.
- Excellent for artistic and technical drawing, office and school use.
- Phthalates free.



* Limited to 1933 pieces.

Sharpening machines & erasers			Minimum
455.	200	Metal model for round and hexagonal pencils of 4 to 10 mm Ø	1
	100	Standard model with its metal box	1
456.	200	Black lacquer Sharpening machine model: A « Collector's Edition » in its metal box.	1
		Plastic models for round, hexagonal and triangular pencils of 4 to 8 mm Ø	
466.	...	009 black 070 red 160 blue	1
		Accessories for 456.000	
100000.	501	Pencil gripper assembled	1
	503	Handle	1
	504	Cutter	1
	505	Snap bearing	1
	508	Circlip	1
	509	Cutter axle	1
	512	Cutting mechanism assembled	1
	514	Drawer	1
	519	Clamper	1
476.	070	Double pencil-sharpener in red plastic	6
149.	299	Table display with 12 red double sharpeners + 20 triangular erasers	1
		Erasers	
149.	310	Triangular eraser	10
	340	Standard eraser for school use, big size	40
	360	Standard eraser for school use, small size	60
171.	420	TECHNIK for graphite pencil and leads	20
172.	420	DESIGN for graphite and colour pencil and leads	20
173.	420	ARTIST soft eraser, recommended for drawing paper	20
176.	304	Kneadable eraser, Art by Caran d'Ache	5

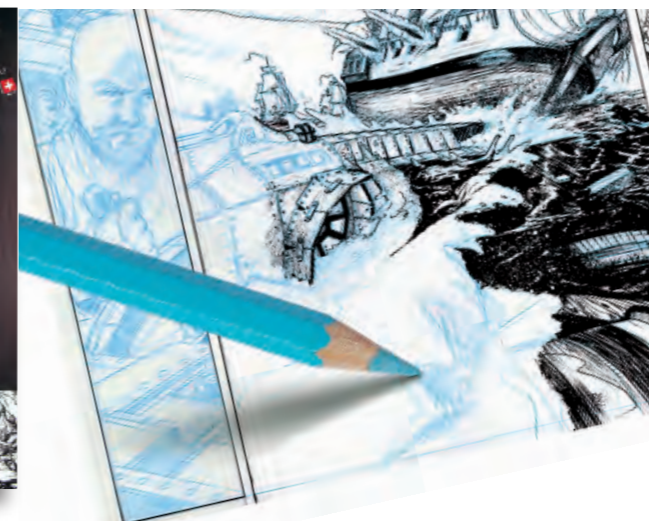


171.420 172.420 173.420



Full Blender-Bright

- A universal colourless oil and wax-based medium for mixing, blending and intensifying colours.
- Gloss effect and colour protection. It forms a waterproof coating and increases protection against UV.
- Hexagonal shape, economical to use – 100% of the blender can be used for a very wide choice of applications.
- Flexible use: sharpened like a pencil for detailed work or applied flat to cover large areas.
- Ideal complement to Caran d'Ache colour pencils, graphites and wax pastels.



Sketcher Non-photo blue pencil

- The Sketcher is a specific blue pencil with fine, soft and resistant lead allowing at once a delicate work and large work for basic sketches.
- It does not appear during the reproductions in black-and-white (scans, photocopies, etc.).
- Ideal for comic strips, animated films, cartoons and illustrations, etc.
- Easily erasable, the Sketcher of Caran d'Ache is the perfect pencil to correct sketches while maintaining the cleanliness of the lines.



NEW

Maxi Fluo

- 4 Maxi fluo pencils: yellow, orange, pink, green.
- Wax-based smooth texture that does not dry out.
- Water-based varnish.
- FSC® Forest Stewardship Council Certified.
- Generous, incomparable application, strong covering power.
- Ideal for a variety of creative activities (drawings, illustrations, scrapbooking) or for underlining texts (environmentally friendly, never dries out and does not run).

Assortments			Minimum
902.	302	Full blender Bright - Blister 2 pieces	10
903.	302	Sketcher / Non-Photo Blue Pencil - Blister 2 pieces	10
491.	240	Maxi fluo yellow	12
	030	Maxi fluo orange	12
	090	Maxi fluo pink	12
	230	Maxi fluo green	12

Brushes

- 115.101: For water-colour technique. Superior-quality squirrel-hair brush Petit Gris.
- 115.102 and 115.103: For oil colours. Superior-quality, extra-long, 100% synthetic fibers with very thick diameters and it can create spring like natural hog bristle hair.
- 115.201: The versatile brush with water container.

Mediums and varnishes

- 901.001: Gloss Picture Varnish, final varnish
- 901.002: Retouching Varnish, restores temporarily the picture
- 901.003: Courtrai drier, reduce the drying time
- 901.004: Painting Medium, used to thin the consistency of oils
- 901.005: Clarified Linseed Oil, improve the flow of colours

Fixatives

- Protector spray for oil and wax pastels (170 ml)
- Spray for pencils, charcoals and dry pastels (400 ml)



116.201 911.000 913.000



115.104 115.105 115.201



901.001 901.002



901.003 901.004 901.005



901.006 901.007 901.008 901.009 901.010

Drawing pads

- Studio quality for drawing and painting: 220 g/m², 20 sheets, acid-free, pH-neutral.
- Professional quality for water-colour: High quality, 300 g/m², 20 sheets, natural white, acid-free, "100% Cotton", fine-grained, pH-neutral. One corner precutted. Excellent for Supracolor, Primalo, Neoart, Museum, watercolours, Technalo, Fibralo.
- Professional quality for drawing and sketching: High quality, 280 g/m², 20 sheets, natural white, acid-free, "100% Cotton", fine-grained, pH-neutral. One corner precutted. Excellent for Pablo, Neopastel, Art by Caran d'Ache, Soft Pastels, Technograh.



454.005 (23x31 cm) / 454.006 (31x41 cm)



454.003 (A3) / 454.004 (A4)



454.007 (23x31 cm) / 454.008 (31x41 cm)



454.011 (24x32 cm)

A5 notebook with canvas cover

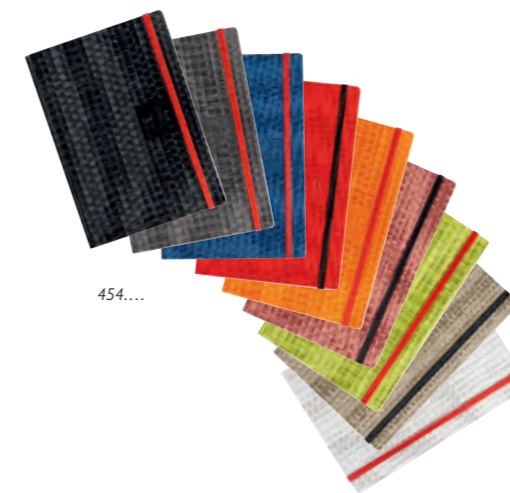
- 44 removable pages, blank or lined pages (depending on the model).
- White FSC® paper 120 g/m², ideal for dry techniques.
- Elastic band closure, rounded corners.
- Flap pocket for storage.

A5 notebook with metal cover

- 64 removable blank pages.
- White paper 130 g/m², ideal for dry techniques.
- Rigid, resistant, metal cover, with embossed logo.
- Elastic band closure, rounded corners.
- Flap pocket for storage, bookmark.

A5 spiral bound notepad

- 50 removable blank pages.
- White FSC® paper 220 g/m² and 120 g/m².
- Papers of 2 different thicknesses for dry drawing and watercolouring.



454....



454.998



454.800

Brushes & Mediums

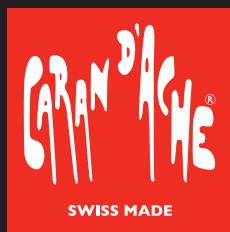
Minimum

Brushes & Mediums		Minimum
Brushes		
115.101	Squirrel-hair brush Petit Gris, 19 cm	5
102	For oil colours, round, 32 cm	5
103	For oil colours, large, 32 cm	5
104	Brush for Acrylic, round, 20 cm	5
105	Brush for Acrylic, wide 3/4, 20 cm	5
201	Brush with water container, 14 cm	10
Mediums and varnishes		
901.001	Gloss Picture Varnish (75 ml)	1
002	Retouching Varnish (75 ml)	1
003	Courtrai drier (75 ml)	1
004	Painting Medium (75 ml)	1
005	Clarified Linseed Oil (75 ml)	1
Accessories and Acrylic varnishes		
901.006	Gloss varnish Acrylic (improves colours' quality) – 75 ml	1
901.007	Mat varnish Acrylic (improves colours' quality) – 75 ml	1
901.008	Retarding Acrylic (slows down the drying time) – 75 ml	1
901.009	Mat gel Acrylic (increases transparency and depth) – 40 ml	1
901.010	Gloss gel Acrylic (increases transparency and depth) – 40 ml	1
Fixatives		
911.000	Protector spray for oil and wax pastels (170 ml)	6
913.000	Spray for pencils, charcoals and dry pastels (400 ml)	6
Accessories		
116.201	Spray pump plastic (50 ml) - empty	1

Drawing pads & notebooks

Minimum

Drawing pads & notebooks			Minimum
Drawing pad, studio quality			
454.003	European A3 size, 20 sheets		5
004	European A4 size, 20 sheets		5
Drawing pad, professional quality			
454.005	Water-colour, 23x31 cm, 20 sheets		5
006	Water-colour, 31x41 cm, 20 sheets		5
007	Drawing & sketching, 23x31 cm, 20 sheets		5
008	Drawing & sketching, 31x41 cm, 20 sheets		5
011	Pastel, tinted paper 3 colors, 24x32 cm, 12 sheets		1
454.501	A5 notebook with white canvas cover - blank pages		1
454.505	A5 notebook with grey canvas cover - blank pages		1
454.509	A5 notebook with black canvas cover - blank pages		1
454.530	A5 notebook with orange canvas cover - blank pages		1
454.570	A5 notebook with red canvas cover - blank pages		1
454.660	A5 notebook with blue canvas cover - blank pages		1
454.710	A5 notebook with green canvas cover - blank pages		1
454.601	A5 notebook with grey canvas cover - lined pages		1
454.602	A5 notebook with black canvas cover - lined pages		1
454.603	A5 notebook with red canvas cover - lined pages		1
454.604	A5 notebook with coral pink canvas cover - lined pages		1
454.605	A5 notebook with blue canvas cover - lined pages		1
454.606	A5 notebook with beige canvas cover - lined pages		1
454.998	A5 notebook with metal cover - blank pages		1
454.800	A5 spiral bound notepad - blank pages		1
454.002	A5 Drawing pad - Graphite Line		1



Copyright by

CARAN d'ACHE SA

19, chemin du Foron - Case postale 332 - CH-1226 Thônex-Genève

carandache.com



This catalogue
is printed
on FSC® paper.

The mark of
responsible forestry